

LUXSUN

PRODUCT CATALOG

LUXSUN TECHNOLOGY CO.,LTD

ADD: 5-6F No.3 Building, Wandu Industry Park, Guanlan Town,
Longhua District, Shenzhen City, Guangdong, China

Tel: +86-755 23760327
Fax: +86-755 23775750
E-mail: sales@luxsun.cc
www.luxsun-light.com





COMPANY PROFILE

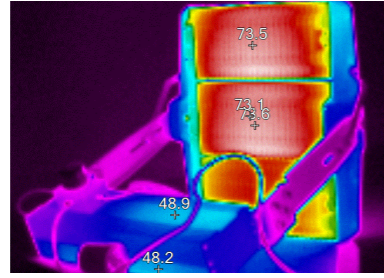
LUXSUN Technology Co.,Ltd was established in 2014 located in Shenzhen, China.As a leading manufacturer which specializes in the research, development and production of outdoor and industrial LED lighting products, all products are strictly manufactured according to ISO9001:2015, ISO14001:2015,ISO45001.

In these years, we have made great success and achievements, we have been awarded more than 50 patents, and our products have passed ETL, ENEC, CB,SAA, CE, SASO, and RoHS certifications. Plus IP66, IK09, LM-79, 5G vibration test, TM-21 and salt spray test. Our products are exported to North America, South America, Europe, Australia and over 85 countries and regions.

Quality Control



High Temperature Test



Thermal Imaging Test



IP Waterproof Test



IP Dust Test



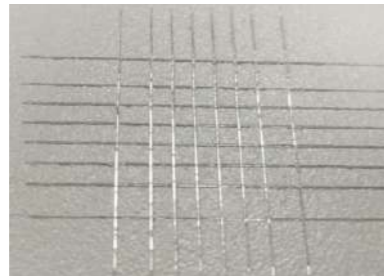
Vibration Test



IK Test



Salt Spray Test



Cross-Cut Test



IES Spectrum Test



LED Inspection



Hi-Pot Testing



Earth Resistance Test

Production line



Aging Testing



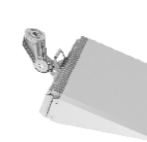
Workshop



OPSPORT
P01-10



OPSPORT-III
P11-14



OPSPORT-IV
P15-18



OPSPORT-V
P19-26



OPSPORT-VI
P27-30

P01-46



OPSPORT-VII
P31-38



OPSPORT-VIII
P39-42



OPSPORT-X
P43-46



OPMILL II
P47-50



OPSKY
P51-56

P47-56



OPCITY-III
P57-62



OPCITY-IV
P63-66



OPCITY-IV
P67-74

P57-74



OPWAY
P75-80



OPLINE
P81-84

P75-84



OPAIR
P85-90



OPAIR III
P91-94

P85-94



OPMILL-II
P95-98

P95-98

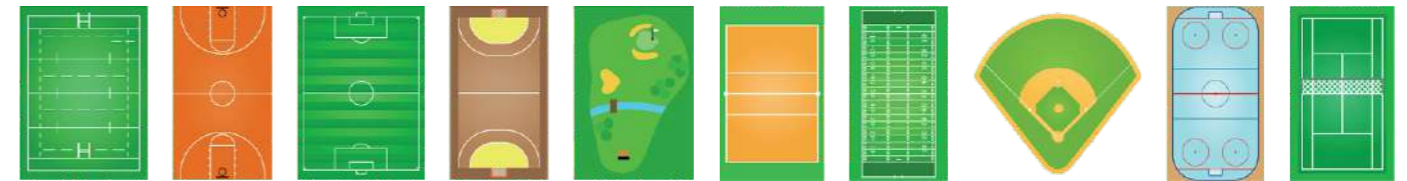
OPSPORT

OpSport

LED Sports & High Mast Lighting

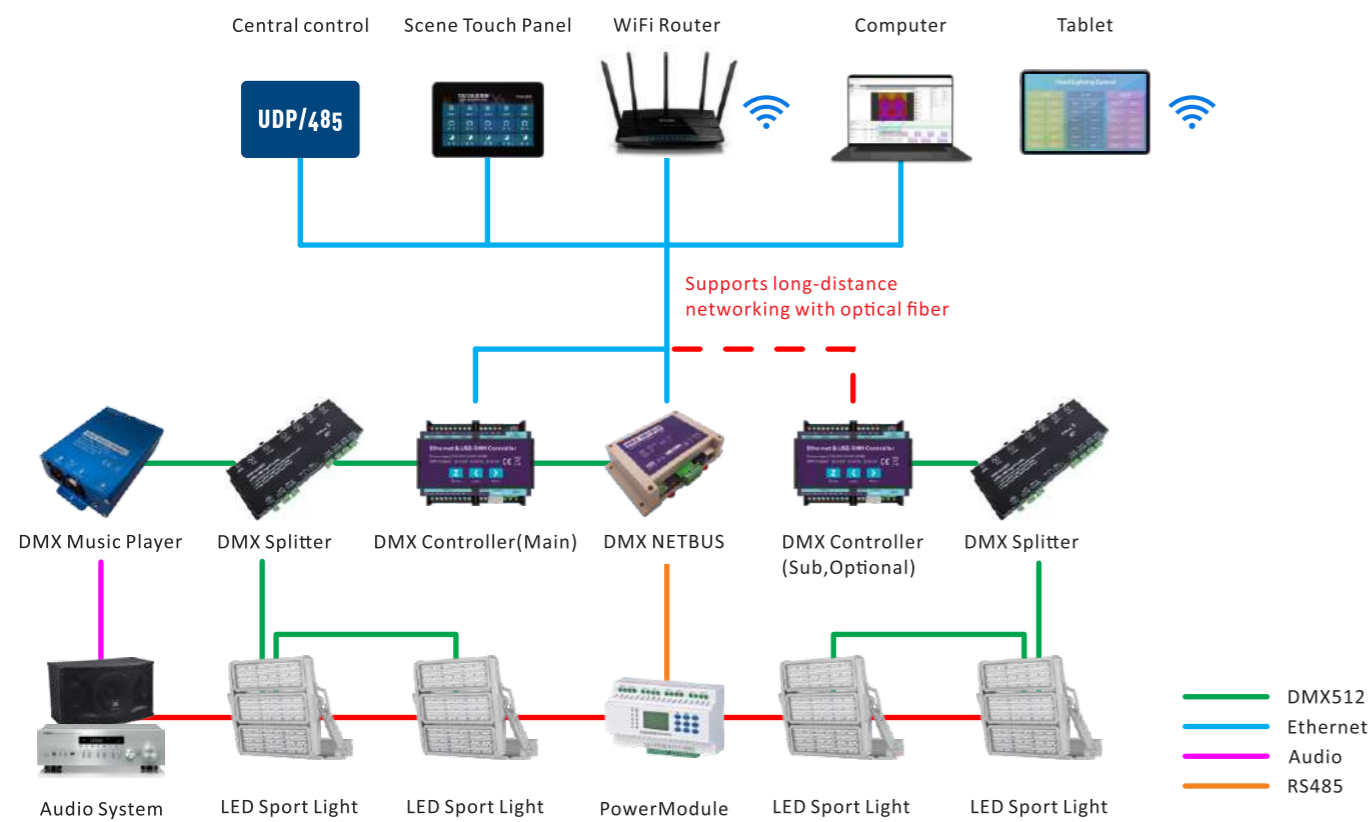
Sports lighting is an important, key feature of any game to give your athletes and spectators the best experience possible, the right light source is critical for the right light experience. OpSport is the right choice for all your outdoor sporting events. Your athletes and fans will appreciate the extra comfort that comes from better lighting, and your communities will appreciate a striking reduction in light pollution.

OpSport provides the best viewing experience, the safety environment, and the highest energy saving for your athletic complex.





Stadium Lighting System Diagram



Solution Description

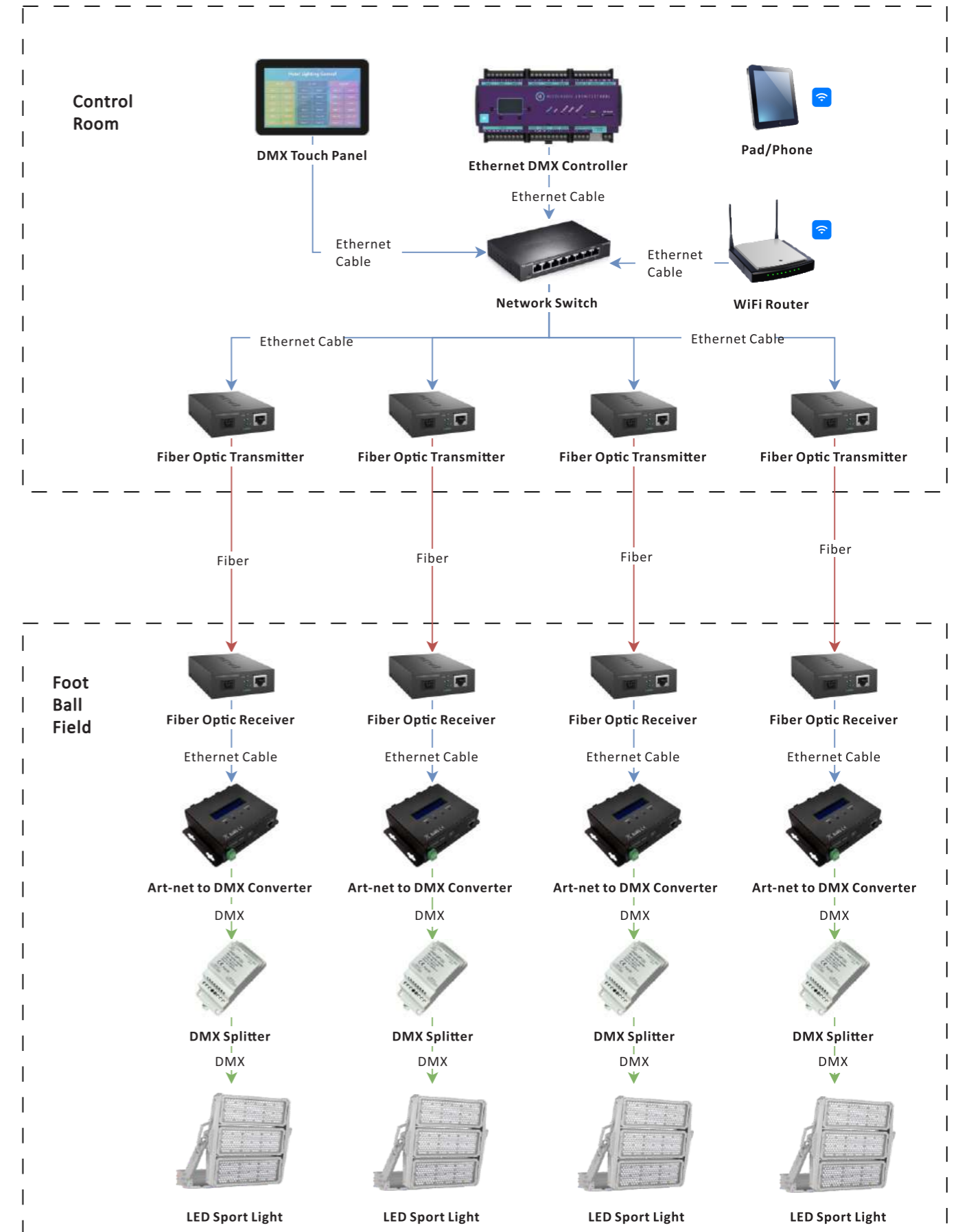
Based on DMX512 stage lighting control technology, this system enables precise control of each individual light through fast programming and real-time output/preview effects. The pre-programmed scenes can be easily downloaded to an Ethernet DMX Controller for automatic running with just one click.

This design includes multiple application scenarios such as HDTV broadcasting, professional competitions, amateur training, music lighting shows, and turning off the lights. All scenes can be controlled not only through touch panels or an APP but also via other central control systems for centralized management.

Features:

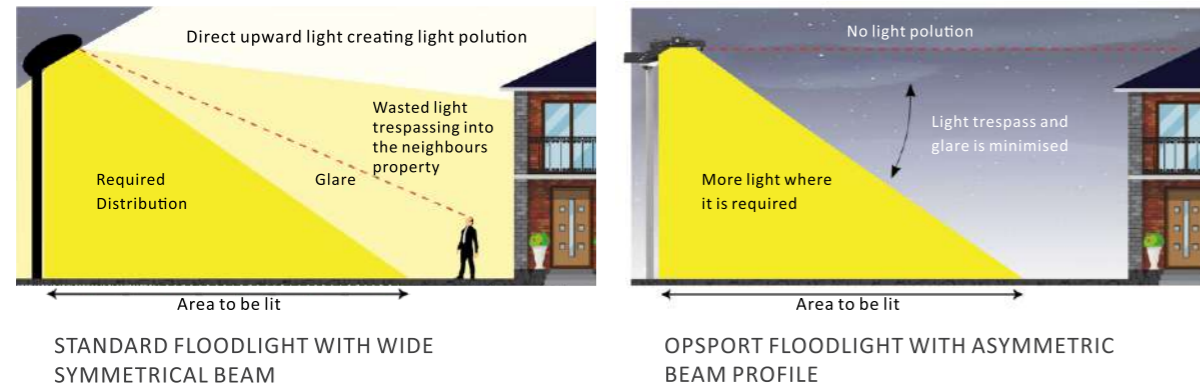
- Single-light control, precise control of each light
- Timeline programming, What you see is what you get
- Support for long-distance networking with optical fiber
- APP and touch panels, one-click control
- DMX512 lighting and music synchronization control
- Integration control of power and DMX lighting signals
- One-click download program, automatic run on power-on
- UDP/RS485 central control and dry contact control
- Time and calendar trigger
- RDM (Remote Device Management)

Diagram of Control System of a Football Field



Putting the light where it's wanted

OpSport series LED sports field & high mast lighting use our custom wide beam profile to put the light where it's wanted and not in your neighbor's property. By using an asymmetric 25x130° or 60x130° beam profile we can take the wasted light that's normally produced by conventional floodlight and direct it where it's needed, giving you a higher illuminance while delivering excellent uniformity and minimum glare.



0° Installation, Reduce Wind Resistance

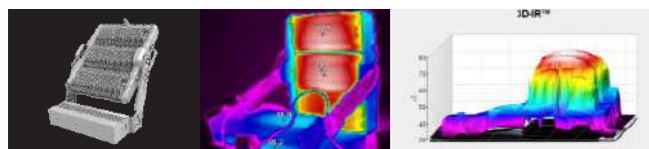
Effective Projected Area (EPA=SCX) Unit:M ²	Tilt angle									
	0°	10°	20°	30°	40°	50°	60°	70°	80°	90°
OPSPORT I 320-480-550W	0.053	0.067	0.098	0.124	0.147	0.171	0.187	0.199	0.206	0.207
OPSPORT II 600-680-750W	0.069	0.089	0.125	0.159	0.193	0.218	0.242	0.256	0.262	0.263
OPSPORT I 800-960-1100W	0.067	0.088	0.116	0.149	0.180	0.205	0.224	0.237	0.244	0.245
OPSPORT II 1200-1360-1500W	0.081	0.109	0.147	0.189	0.228	0.262	0.283	0.300	0.302	0.303
OPSPORT I 1440-1500-1650W	0.082	0.116	0.159	0.212	0.261	0.303	0.337	0.361	0.366	0.365
OPSPORT II 1800-2040W	0.100	0.143	0.196	0.263	0.323	0.375	0.416	0.442	0.455	0.456

Formula: $F = 1/2 RH \times S \times Cd \times V^2(N)$
 Cd is the drag coefficient;
 S is the area of the surface to be loaded(m²).
 RH is equal to 1,225 kg/m³(air volumic mass);
 V is the wind speed (m/s).
 V = 57 m/s(205 km/h) for heights of more than 15 m.
 The drag coefficient is 1,2



Cooler running, Thermal Design

OpSport unique design can speed up heat dissipation quickly, thereby extending component life and ultimately prolonging the useful life of the fixture.



1. Tempered glass

Tempered Glass: Extra-clear toughened glass with UV resistance and anti-corrosion, offering strong lens protection and easy cleaning in harsh environments.

2. Low Copper Content Aluminum

Pre-treated aluminum with 0.0907% copper, reducing electrochemical corrosion and boosting resistance in corrosive environments.

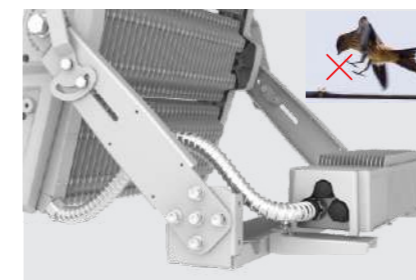
3. Surface Treatment

The housing is chemically chromated and powder-coated, providing excellent surface protection and long-lasting corrosion resistance.



Lamp respirator

Prevent condensation and fogging, increase product lifespan.



Stainless Steel Tube To Protect Cables



Easy installation

Universal mounting bracket and angle adjustment dial makes installing the OpSport a breeze. adjustable angle ±90°.

OPSPORT

320W-2040W

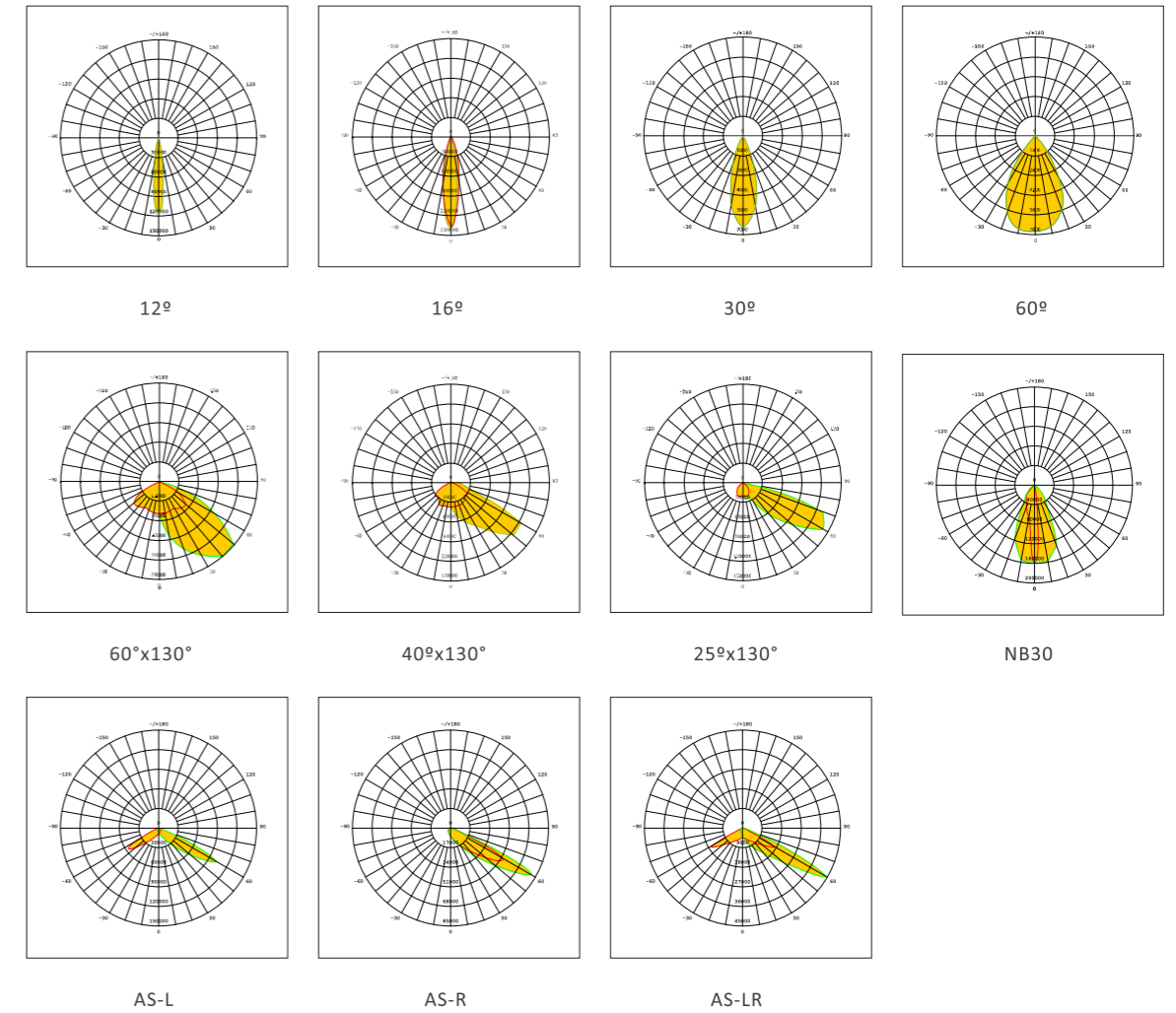
Product Specifications

Part No.	LUX-SP-320/480/550/600/680/750	LUX-SP-800/880/960/1100/1200/1360/1500	LUX-SP-1440/1510/1650/1800/2040
Power	320W/480W/550W/600W/680W/750W	800W/880W/960W/1100W/1200W/1360W/1500W	1440W/1510W/1650W/1800W/2040W
Voltage	AC100-240V / 277-480VAC		
Angle	12°/16°/30°/60°/NB30/60°x130°/40°x130°/25°x130°/AS-L/AS-R/AS-LR		
Luminous Efficacy	Up to 150lm/W		
CCT	5700K(2200K-6500K optional)		
CRI	>70 (>80, >90 available)		
Frequency	50/60 Hz		
LED Chips	Lumileds/Osram chip		
Driver	INVENTRONICS/MOSO		
Epoxy-polyester Hybrid	Anti-corrosion		
Powder coating	AkzoNobel		
IP Rating	IP66		
Operating temperature	-30°C to +50°C		
Function	DMX/Dali or 0-10V Dimming / Non-dimming		
Warranty	5/7/10 years		
Life span	> 100000 hours(Lifetime at L70)		
Housing Color	Grey		
Certificate	ENEC/CB/SAA/C-TICK/CE/ROHS/LM-79/TM-21/ISTMT/IP66		

Package

	320W	480W	550W	800W	880W
Luminaire Net Weight	16.7KG	17KG	18.2KG	30KG	31.6KG
Export Carton Size	622x286x618mm	622x286x618mm	622x286x618mm	745x215x860mm	745x215x860mm
	960W	1100W	1440W	1510W	1650W
Luminaire Net Weight	33.8KG	28.66KG	41KG	43.8KG	43.8KG
Export Carton Size	745x215x860mm	745x215x860mm	775x235x1080mm	775x235x1080mm	775x235x1080mm

Light distribution curve

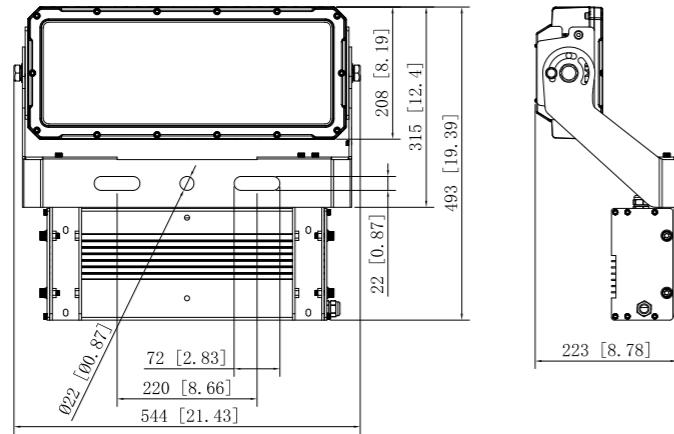


Package

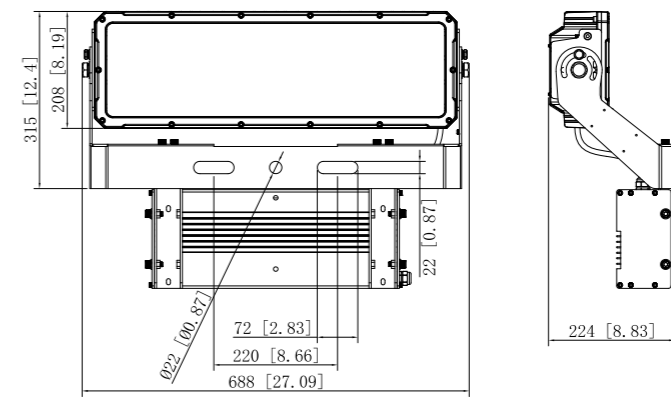
	600W	680W	750W	1200W
Luminaire Net Weight	21KG	21KG	21KG	35KG
Export Carton Size	766x286x618mm	766x286x618mm	766x286x618mm	889x215x860mm
	1360W	1500W	1800W	2040W
Luminaire Net Weight	43KG	52.3KG	52.3KG	54.3KG
Export Carton Size	889x215x860mm	889x215x860mm	919x235x1080mm	919x235x1080mm

Product Size

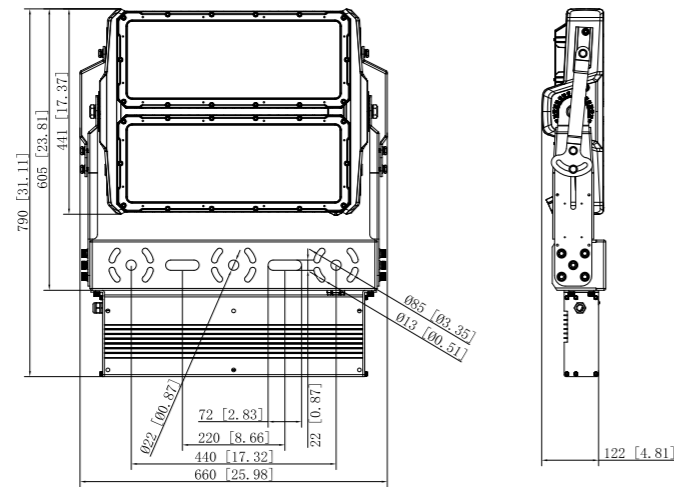
Power (320W/480W/550W)



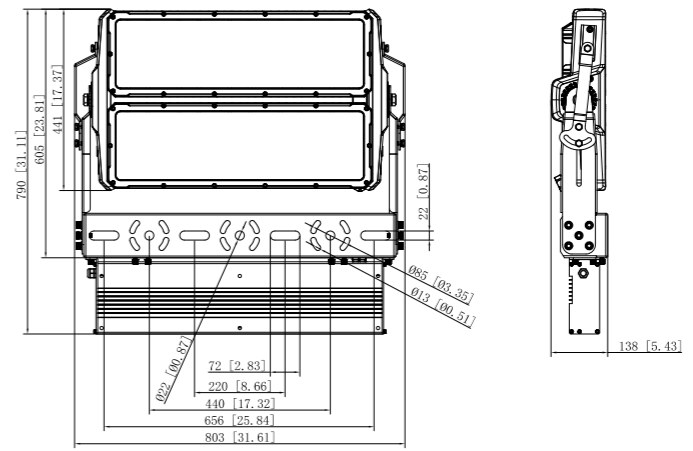
Power (600W/680W/750W)



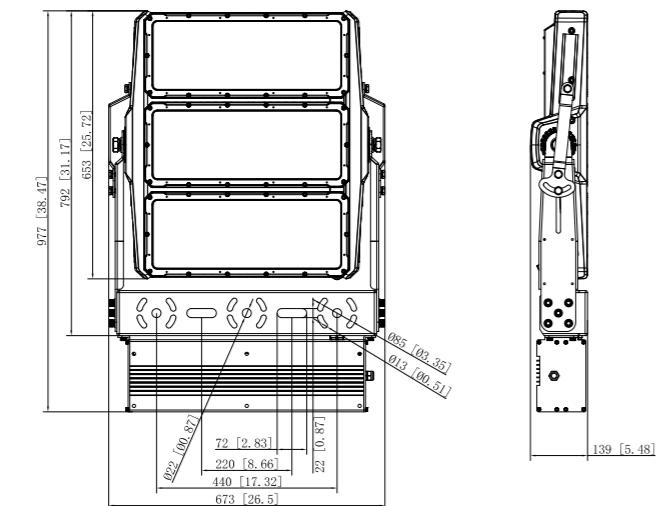
Power (800W/880W/960W/1100W)



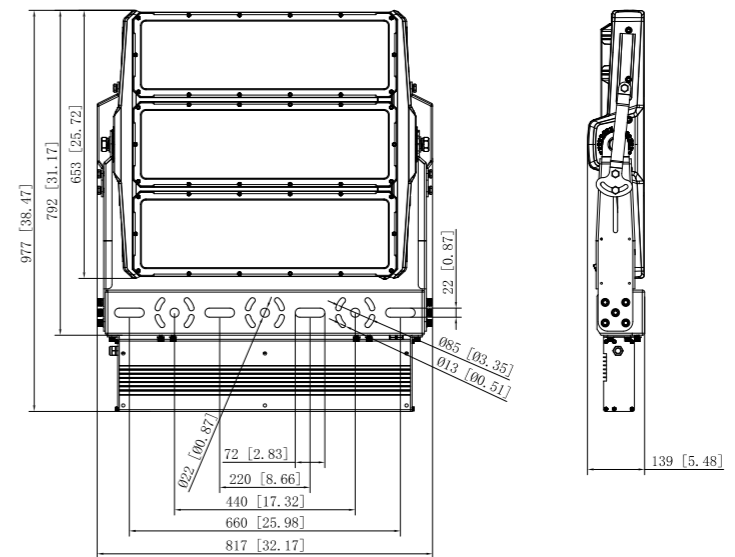
Power (1200W/1360W/1500W)



Power (1440W/1510W/1650W)



Power (1800W/2040W)

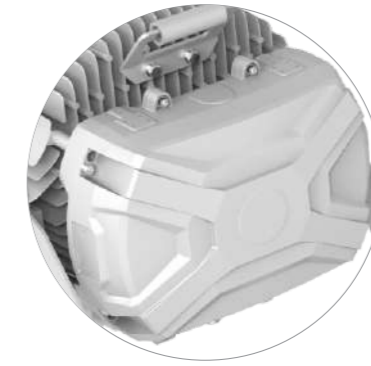


OPSPORT-III



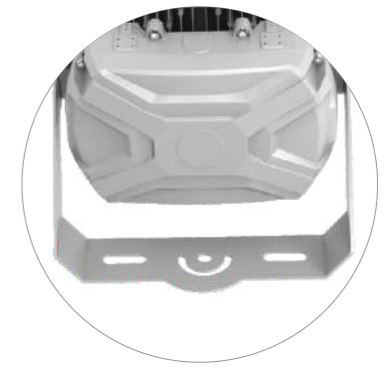
Anti-glare cover

Effectively avoid light pollution



Driver Box

Integrated or separate installation



U-Bracket

Curved installation is more convenient

VARIOUS INSTALLATION METHODS



Integrated Driver
+U-Bracket



U-Bracket



Mx Bracket

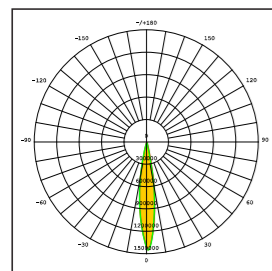
OPSPORT-III

600W-800W

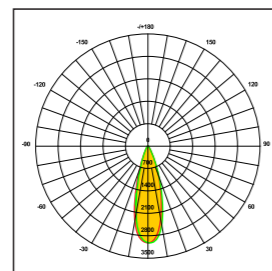
Product Specifications

Part No.	LUX-SPIII-600	LUX-SPIII-680	LUX-SPIII-750	LUX-SPIII-800
Power	600W	680W	750W	800W
Voltage	AC180-528V / 277-480VAC			
Angle	15°/30°/40°/50°/60°			
Luminous Efficacy	Up to 160lm/W			
CCT	5700K(2200K-6500K optional)			
CRI	>70 (>80, >90 available)			
Frequency	50/60 Hz			
LED Chips	Lumileds/Osram chip			
Driver	INVENTRONICS/MOSO			
5G Vibration Rating	EN 60068-2-6			
Epoxy-polyester Hybrid	Anti-corrosion			
IP Rating	66			
Operating temperature	-30°C to +45°C			
Function	DMX/Dali or 0-10V Dimming / Non-dimming			
Warranty	5 years			
Life span	> 100000 hours(Lifetime at L70)			
Housing Color	Grey			
Certificate	ENEC/CB/SAA/C-TICK/CE/ROHS/LM-79/TM-21/ISTMT/IP66			

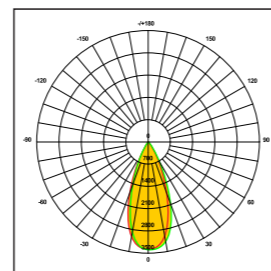
Light distribution curve



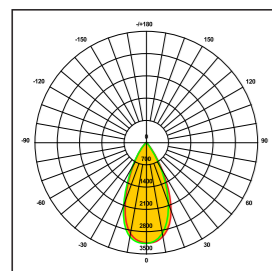
15°



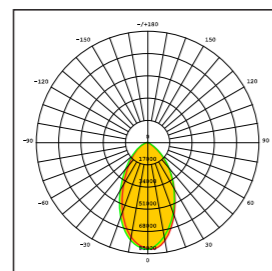
30°



40°



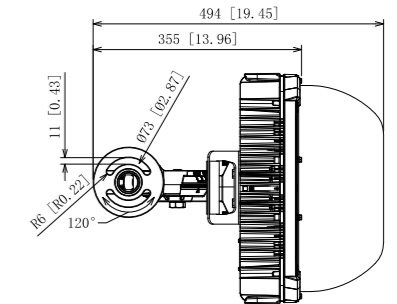
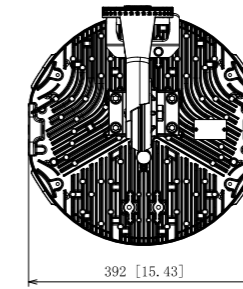
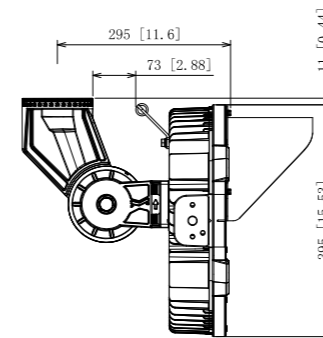
50°



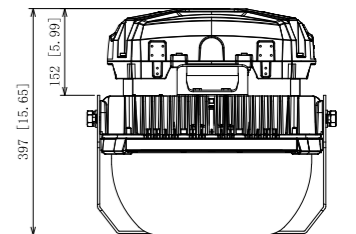
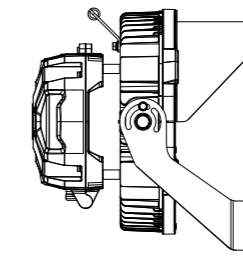
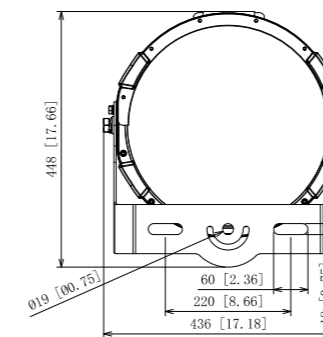
60°

Product Size

Power (600W/680W/750W/800W)



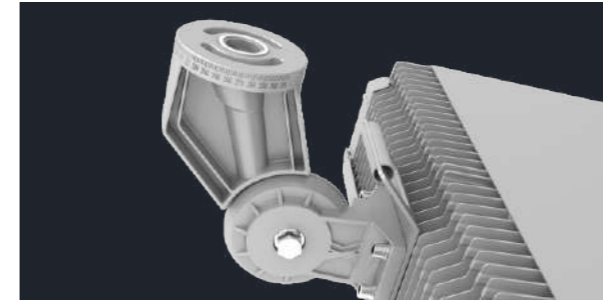
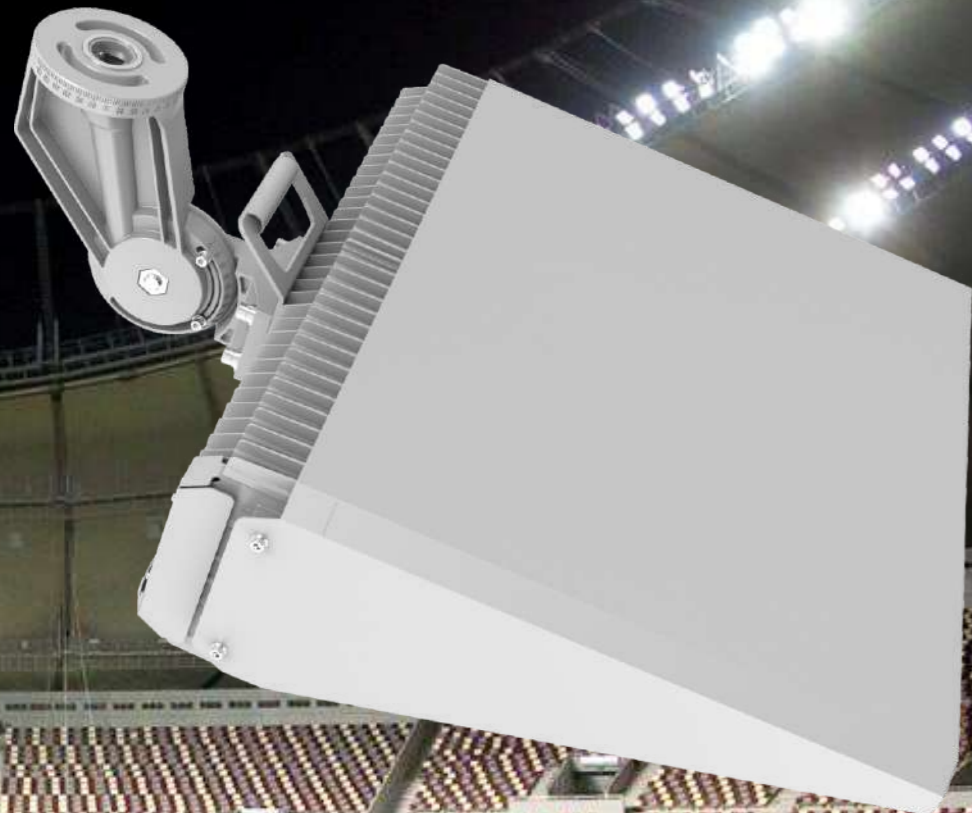
Power (600W/680W/750W/800W)



Product Specifications

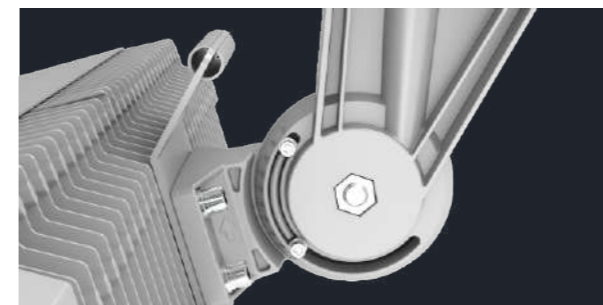
	600W	680W	750W	800W
Luminaire Net Weight	21KG	21KG	21.5KG	21.5KG
Export Carton Size	535x475x475mm	535x475x475mm	535x475x475mm	535x475x475mm

OPSPORT-IV



Mx Bracket

Various installation angles



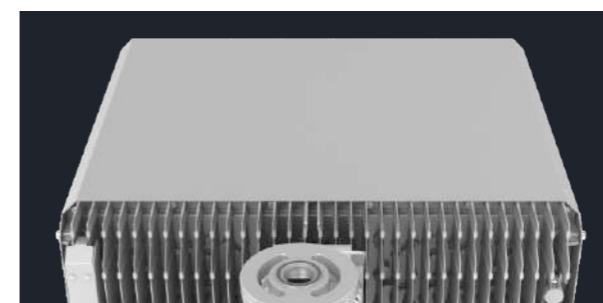
Easy installation

Universal mounting bracket and angle adjustment dial makes installing the OpSport IV a breeze.



Lamp respirator

Prevent condensation and fogging, increase product lifespan.



Anti-glare cover

Effectively avoid light pollution

OPSPORT-IV

320W-750W

Product Specifications

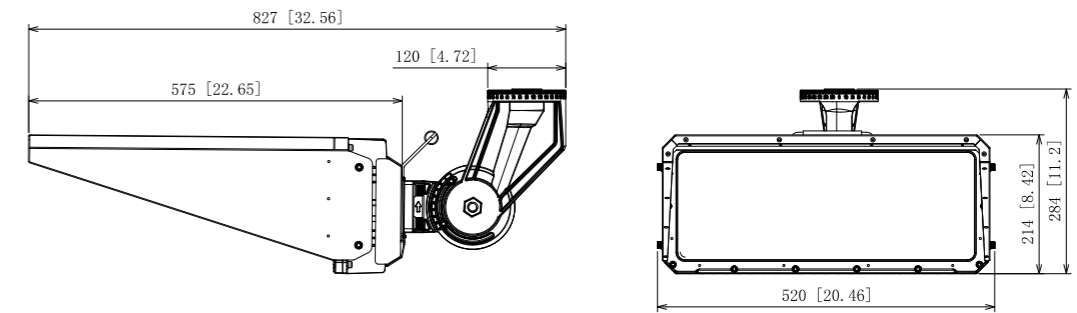
Part No.	LUX-SPIV-320	LUX-SPIV-480	LUX-SPIV-550	LUX-SPIV-600	LUX-SPIV-680	LUX-SPIV-750
Power	320W	480W	550W	600W	680W	750W
Voltage	AC100-277V / 277-480VAC					
Angle	T12°/T16°/T30°/T60°/NB30					
Luminous Efficacy	Up to 140lm/W					
CCT	5700K(3000K-5700K optional)					
CRI	>70 (>70, >80 available)					
Frequency	50/60 Hz					
LED Chips	Lumileds/Osram chip					
Driver	INVENTRONICS/MOSO					
3G Vibration Rating	EN 60068-2-6					
Epoxy-polyester Hybrid	Anti-corrosion					
IP Rating	66					
Operating temperature	-30°C to +45°C					
Funtion	DMX/Dali or 0-10V Dimming / Non-dimming					
Warranty	5 years					
Life span	> 100000 hours(Lifetime at L70)					
Housing Color	Grey					
Certificate	ENEC/CB/SAA/C-TICK/CE/ROHS/LM-79/TM-21/ISTMT/IP66					

Product Specifications

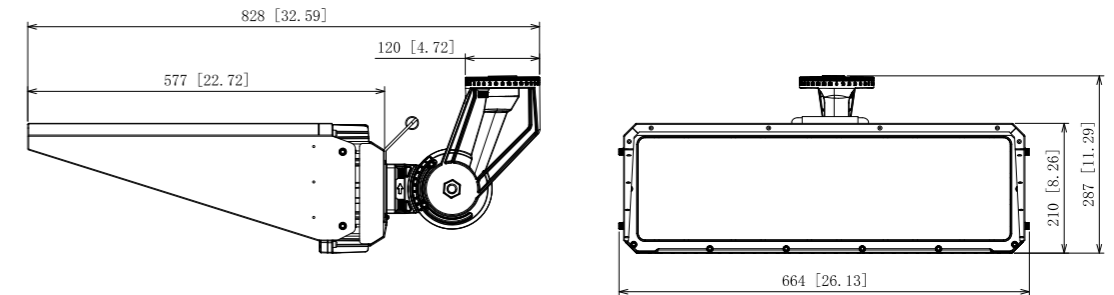
	320W	480W	550W	600W	680W	750W
Luminaire Net Weight	13.5KG	13.5KG	13.5KG	16.1KG	16.1KG	16.1KG
Export Carton Size	597x304x1053mm	597x304x1053mm	597x304x1053mm	750x312x1060mm	750x312x1060mm	750x312x1060mm

Product Size

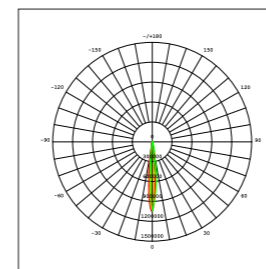
Power (320W/480W/550W)



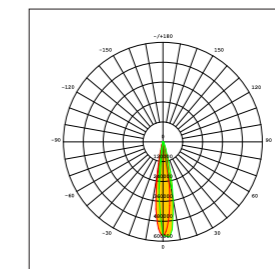
Power (600W/680W/750W)



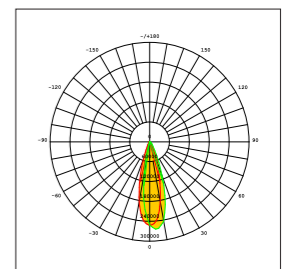
Light distribution curve



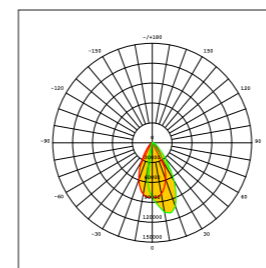
T12°



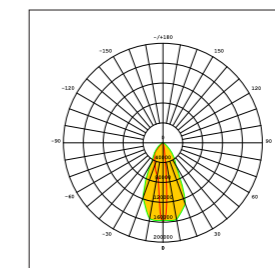
T16°



T30°



T60°



NB30

OPSPORT-V

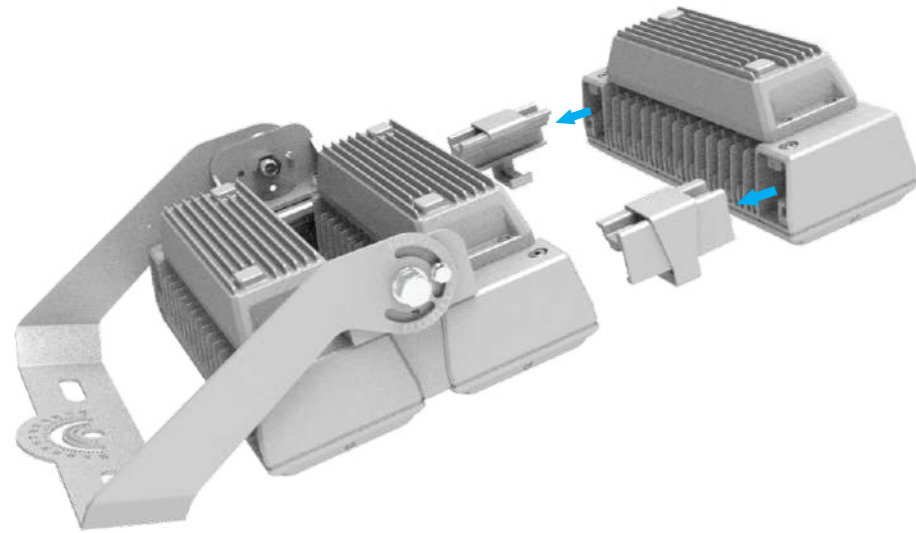


Applications



EASY FOR STOCK LED MODULES AND ACCESSORIES

Can assemble any wattage you want base on project needs.



MOUNTING OPTIONS

OPSPORT-V FLEXIBLE CONTROL GEAR



1. ON FITTING



2. BOX ON POLE



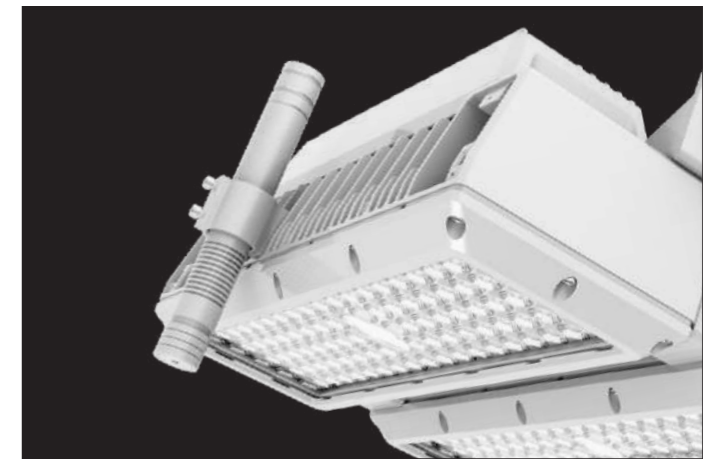
3. DRIVER INSIDE POLE



4. CABINET

Laser Pointer

Contractors can now aim the OpSport-V accurately in the daytime by fitting a high power laser pointer.



U-Bracket

The bending mounting bracket allows enough space for easier operation when installation

Easy installation

Universal mounting bracket and angle adjustment dial makes installing the OpSport-V a breeze. adjustable angle $\pm 90^\circ$.



OPSPORT-V

240W-1200W

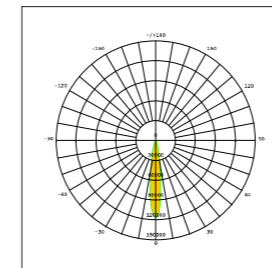
Product Specifications

Part No.	LUX-SPV-240	LUX-SPV-480	LUX-SPV-720	LUX-SPV-960	LUX-SPV-1200
Power	240W	480W	720W	960W	1200W
Voltage	AC100-240V / 277-480VAC				
Angle	12°/30°/60°/25°x130°/40°x130°/60°x130°				
Luminous Efficacy	Up to 150lm/W without glass				
CCT	5700K(2200K-6500K optional)				
CRI	>70 (>80, >90 available)				
Frequency	50/60 Hz				
LED Chips	Lumileds/Osram				
Driver	INVENTRONICS				
5G Vibration Rating	EN 60068-2-6				
Epoxy-polyester Hybrid	Anti-corrosion				
IP Rating	66				
Operating temperature	-30°C to +45°C				
Function	Dali or 0-10V Dimming / Non-dimming				
Warranty	5 years				
Life span	100000 hours(Lifetime at L70)				
Housing Color	Grey				
Certificate	ENEC/CB/SAA/C-TICK/CE/ROHS/LM-79/TM-21/ISTMT/IP66				

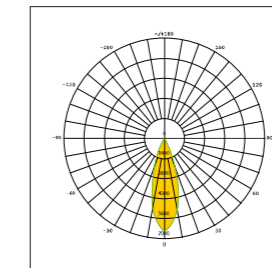
Package

	240W	480W	720W	960W	1200W
Luminaire Net Weight	6.43KG	12.37KG	19.2KG	28.1KG	34.8KG
Export Carton Size	537x198x314mm	537x223x478mm	512x235x705mm	542x236x880mm	542x236x1045mm

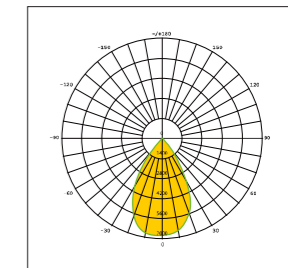
Light distribution curve



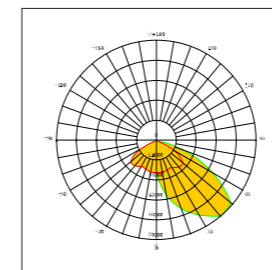
12°



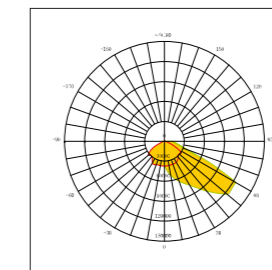
30°



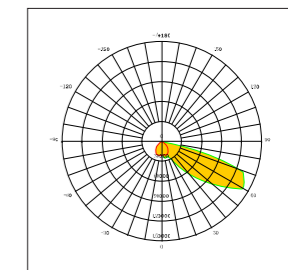
60°



60°x130°



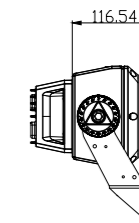
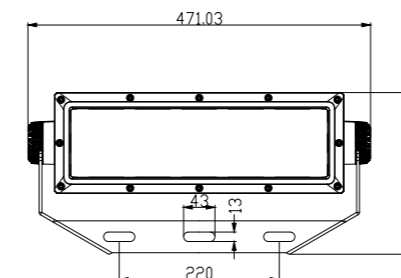
40°x130°



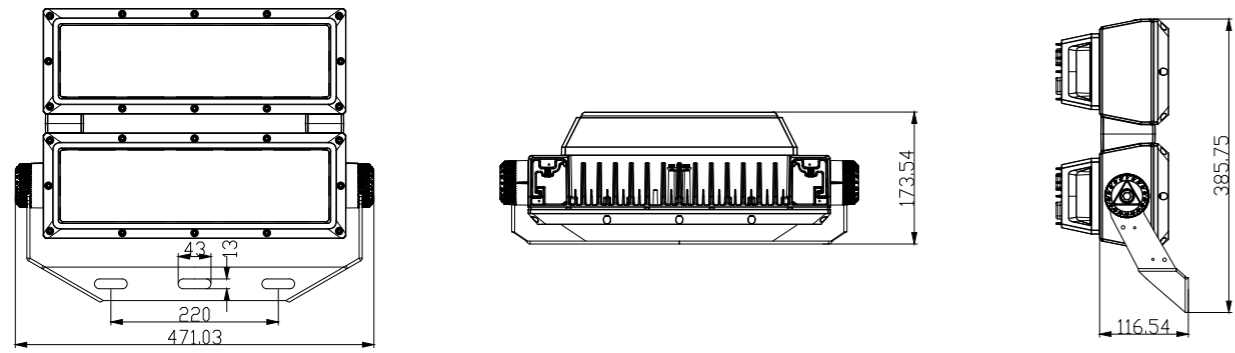
25°x130°

Product Size

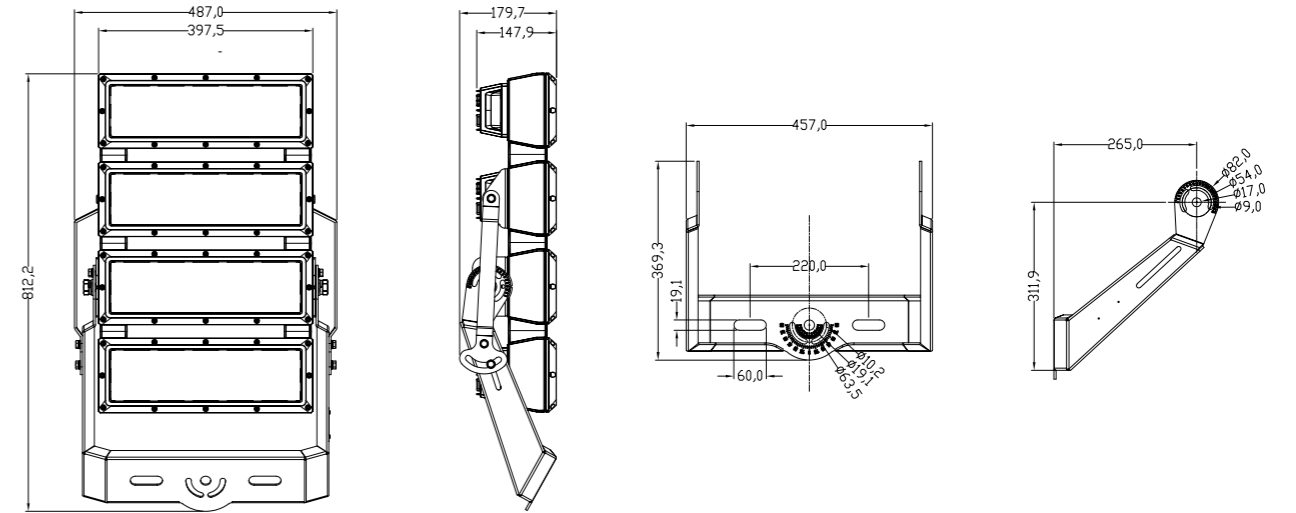
Power (240W)



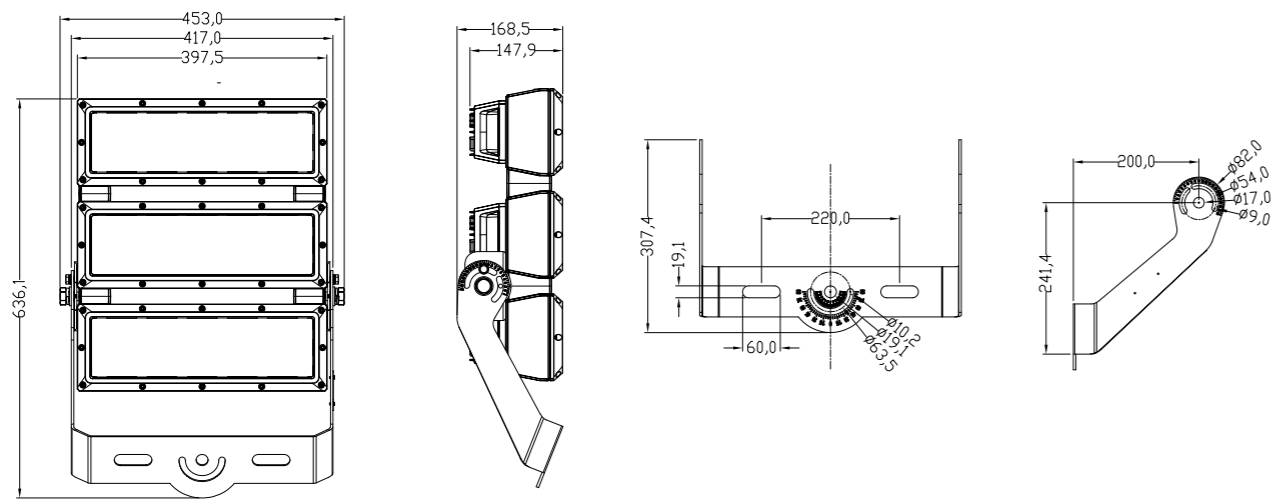
Power (480W)



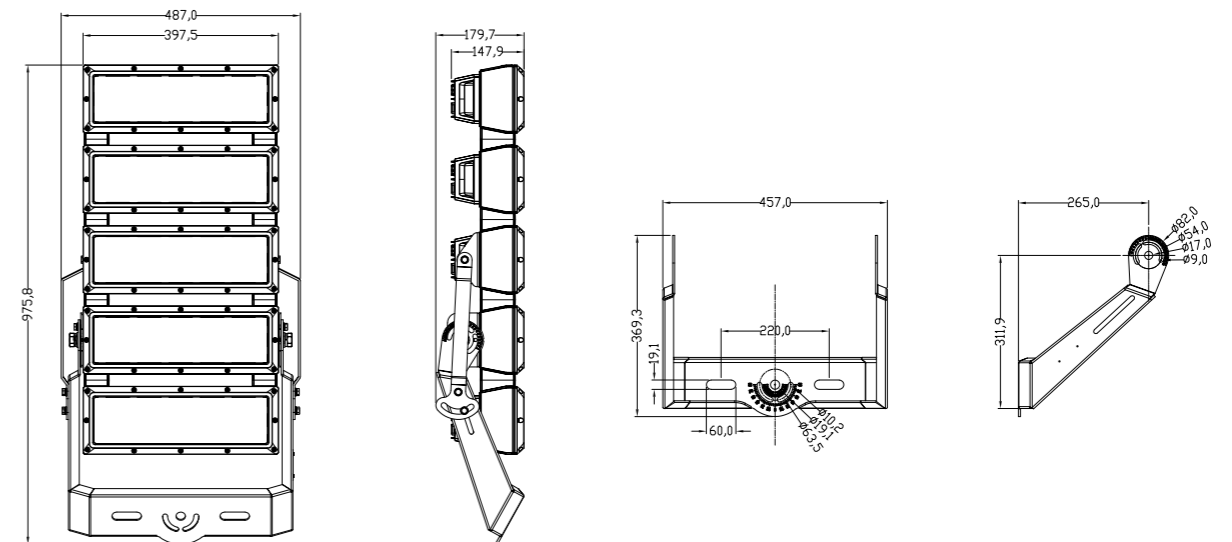
Power (960W)



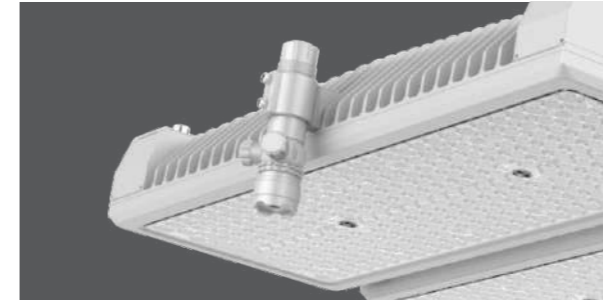
Power (720W)



Power (1200W)

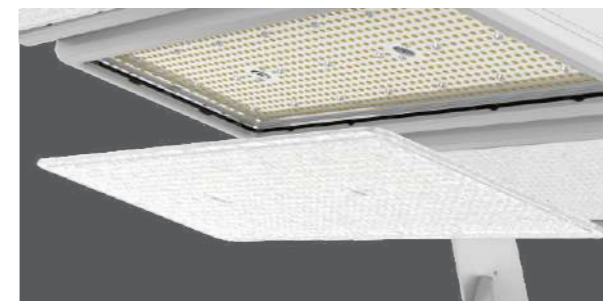


OPSPORT-VI



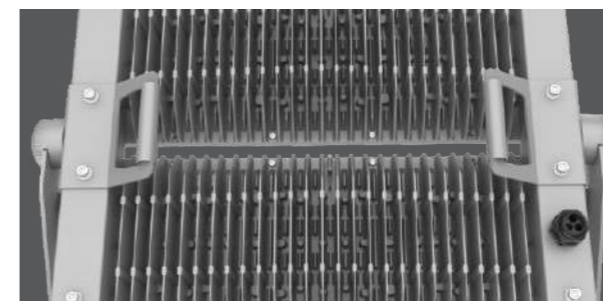
Laser Pointer

Contractors can now aim the OPSPORT-VI accurately in the daytime by fitting a high power laser pointer.



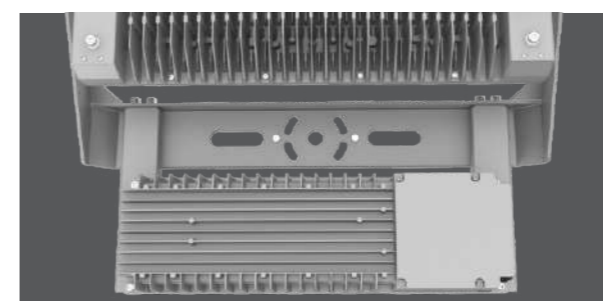
PC Lens

Multiple professional optics



Handle Design

It is convenient to lift and lower the lamp. When installing the hanging rope, it can be passed through the handle hole, which is convenient for lifting and installing the lamp.



Partitioned Heat Dissipation Design

The power supply and lamp body heat sink are divided into zones to reduce thermal interference, thus extending the service life of the power supply and lamp beads.



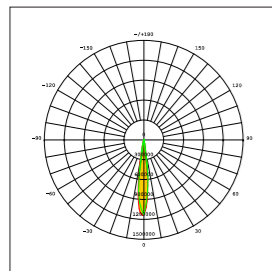
OPSPORT-VI

500W-1800W

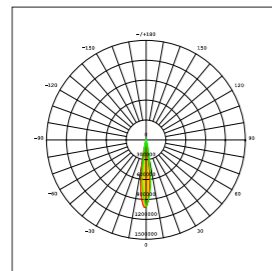
Product Specifications

Part No.	LUX-SPVI-500	LUX-SPVI-600	LUX-SPVI-1000	LUX-SPVI-1200	LUX-SPVI-1500	LUX-SPVI-1800
Power	500W	600W	1000W	1200W	1500W	1800W
Module	1 Module		2 Modules		3 Modules	
Voltage	AC100-277V / AC180-528V / 277-480VAC					
Angle	12°/15°/25°/40°/T30					
Luminous Efficacy	Up to 160-180lm/W					
CCT	5700K(2200K-6500K optional)					
CRI	>70 (>80, >90 available)					
Frequency	50/60 Hz					
LED Chips	Lumileds/Seoul					
Driver	INVENTRONICS/MOSO					
5G Vibration Rating	EN 60068-2-6					
Epoxy-polyester Hybrid	Anti-corrosion					
Operating temperature	-30°C to +45°C					
Function	DMX/Dali or 0-10V Dimming / Non-dimming					
Warranty	5 years					
Life span	> 100000 hours(Lifetime at L70)					
Housing Color	Grey					
Certificate	ENEC/CB/SAA/C-TICK/CE/ROHS/LM-79/TM-21/ISTMT/IP66					

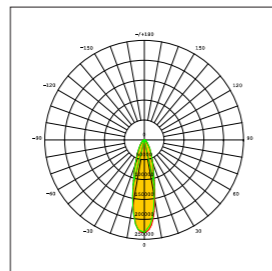
Light distribution curve



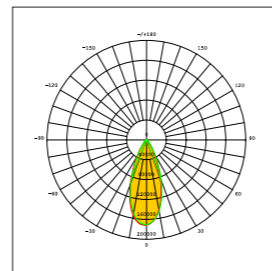
12°



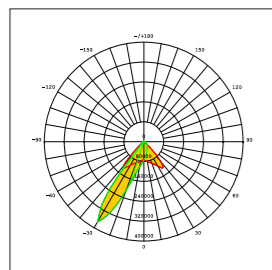
15°



25°



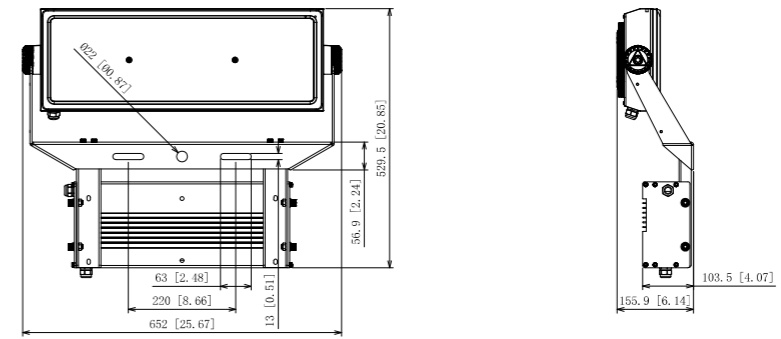
40°



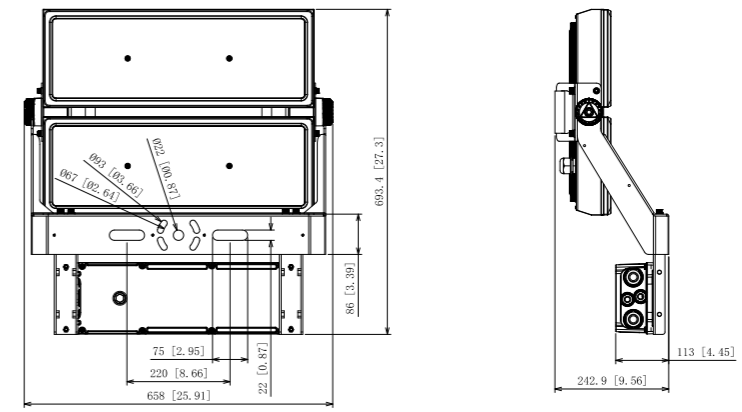
T30

Product Size

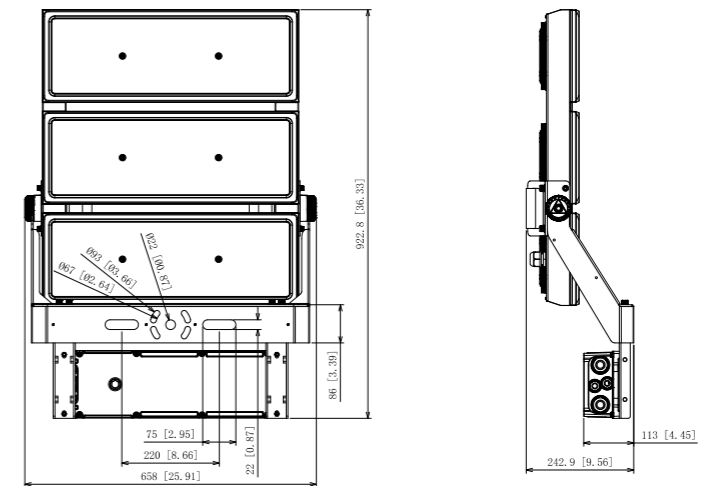
Power (500W/600W)



Power (1000/1200W)



Power (1500W/1800W)



Package

	500W	600W	1000W	1200W	1500W	1800W
Luminaire Net Weight	13.5KG	13.5KG	26KG	26KG	32.2KG	32.2KG
Export Carton Size	717x220x630mm	717x220x630mm	728x277x804mm	728x277x804mm	728x277x1034mm	728x277x1034mm

OPSPORT-VII

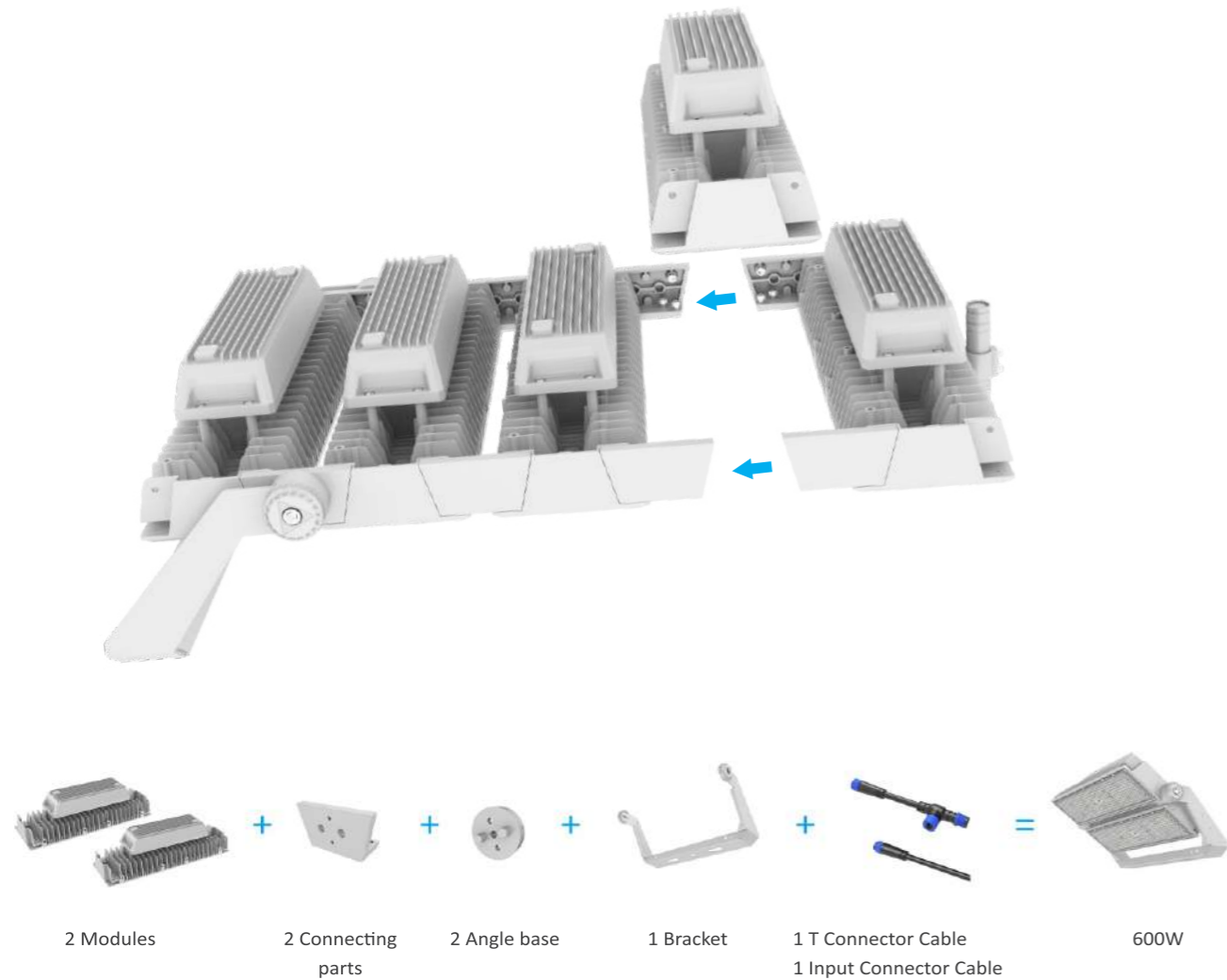


Applications



EASY FOR STOCK LED MODULES AND ACCESSORIES

Can assemble any wattage you want base on project needs.



MOUNTING OPTIONS

OPSPORT-VII FLEXIBLE CONTROL GEAR



ON FITTING



2. BOX ON POLE



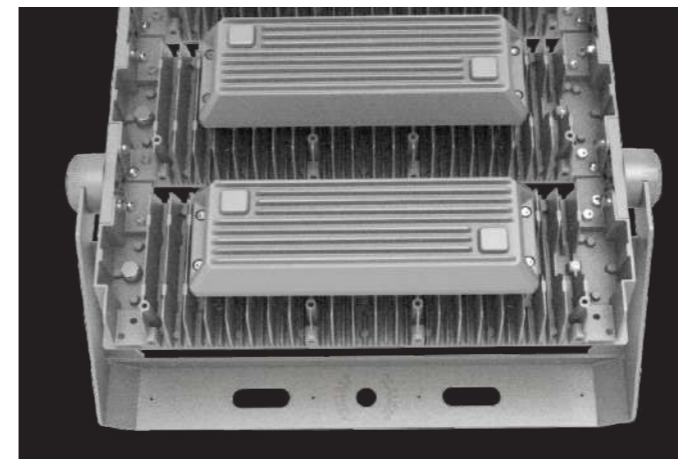
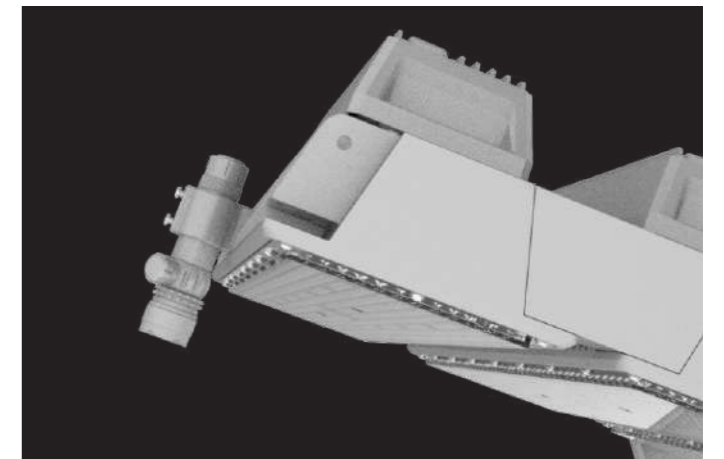
3. DRIVER INSIDE POLE



4. CABINET

Laser Pointer

Contractors can now aim the OPSPORT-VII accurately in the daytime by fitting a high power laser pointer.

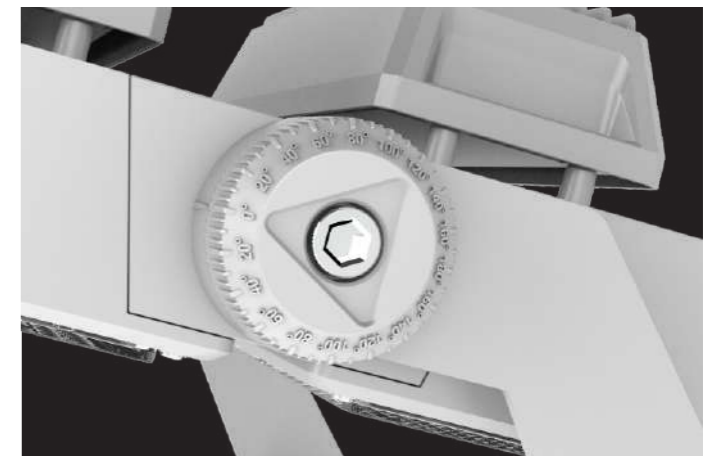


U-Bracket

The bending mounting bracket allows enough space for easier operation when installation

Easy installation

Universal mounting bracket and angle adjustment dial makes installing the OPSPORT-VII a breeze. adjustable angle $\pm 90^\circ$.



OPSPORT-VII

200W-1500W

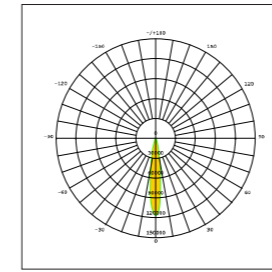
Product Specifications

Part No.	LUX-SPVII-200	LUX-SPVII-240	LUX-SPVII-300	LUX-SPVII-400	LUX-SPVII-480	LUX-SPVII-600	LUX-SPVII-900	LUX-SPVII-1200	LUX-SPVII-1500
Power	200W	240W	300W	400W	480W	600W	900W	1200W	1500W
Module	1Module			2Modules			3Modules	4Modules	5Modules
Voltage	AC100-240V / 180-528VAC								
Angle	14°/30°/45°/60°/70x105°/70x115°								
Luminous Efficacy	Up to 150-170lm/W								
CCT	5700K(2200K-6500K optional)								
CRI	>70 (>80, >90 available)								
Frequency	50/60 Hz								
LED Chips	Lumileds/Seoul								
Driver	LED/INVENTRONICS/MOSO								
5G Vibration Rating	EN 60068-2-6								
Epoxy-polyester Hybrid	Anti-corrosion								
Operating temperature	-30°C to +45°C								
Funtion	DMX/Dali or 0-10V Dimming / Non-dimming								
Warranty	5 years								
Life span	> 100000 hours(Lifetime at L70)								
Housing Color	Grey								
Certificate	ENEC/CB/SAA/C-TICK/CE/ROHS/LM-79/TM-21/ISTMT/IP66								

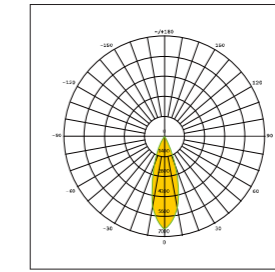
Package

	200W	240W	300W	400W	480W
Luminaire Net Weight	6.7KG	6.7KG	6.7KG	12KG	12KG
Export Carton Size	635x229x321mm	635x229x321mm	635x229x321mm	646x219x501mm	646x219x501mm
	600W	900W	1200W	1500W	
Luminaire Net Weight	12KG	17.2KG	24.9KG	29.5KG	
Export Carton Size	646x219x501mm	646x219x669mm	646x219x837mm	651x224x1010mm	

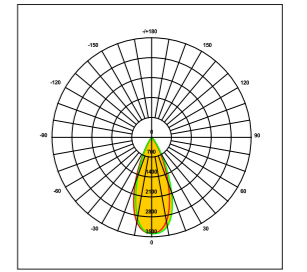
Light distribution curve



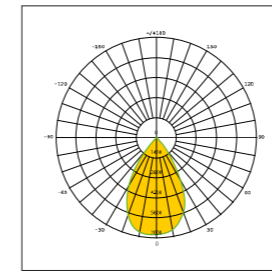
14°



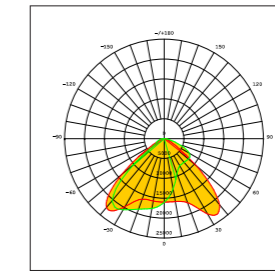
30°



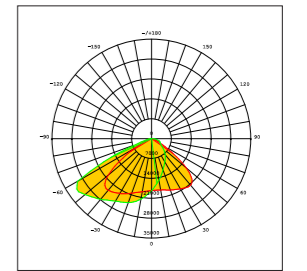
45°



60°



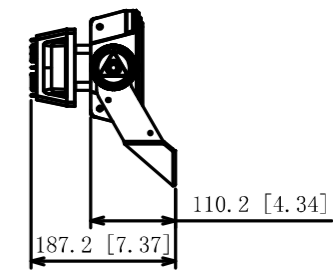
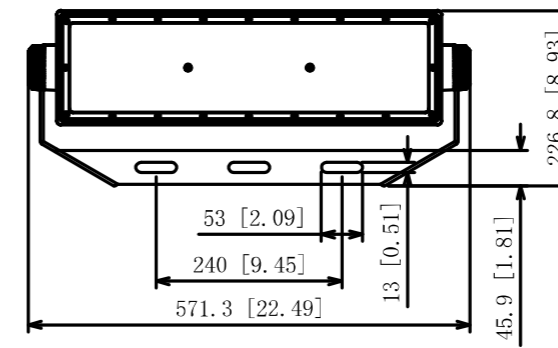
70x105°



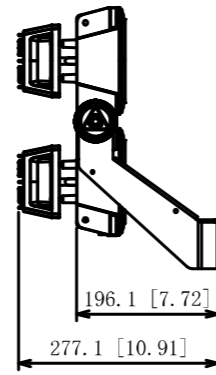
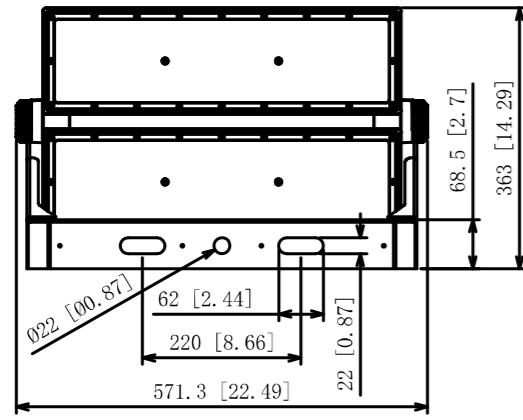
70x115°

Product Size

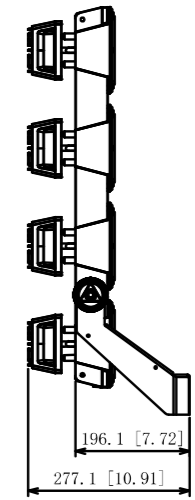
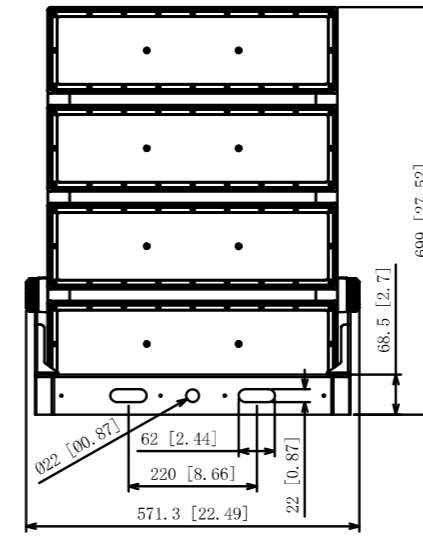
Power (200W/240W/300W)



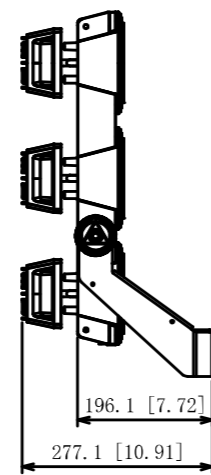
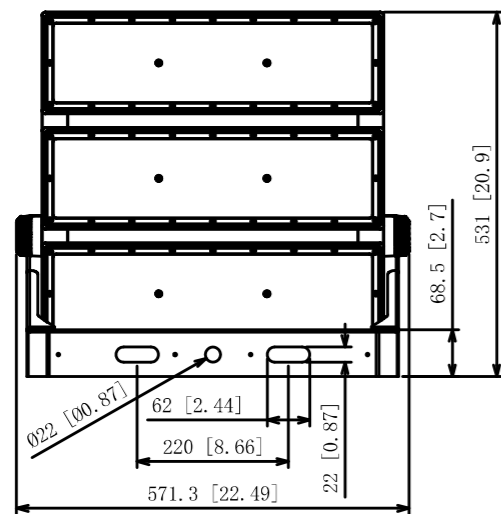
Power (400W/480W/600W)



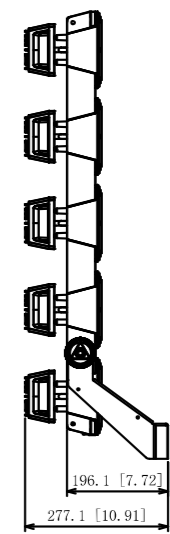
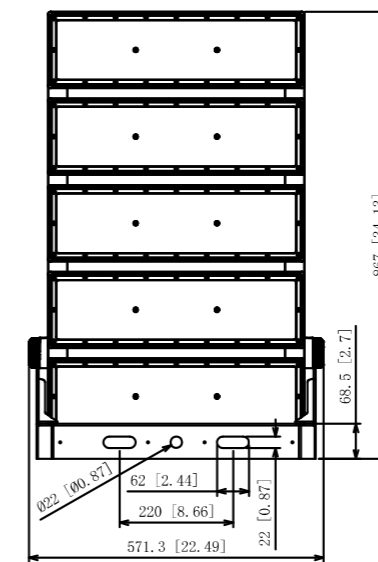
Power (1200W)



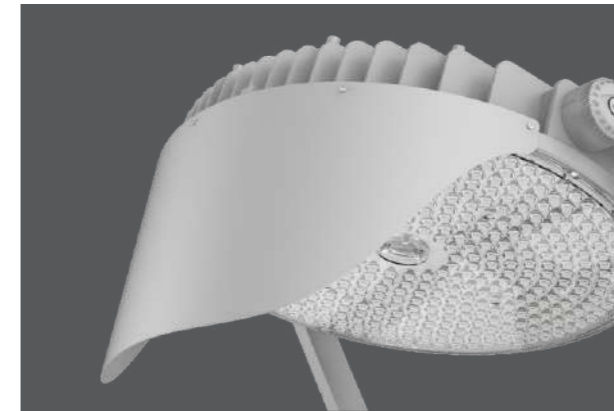
Power (900W)



Power (1500W)

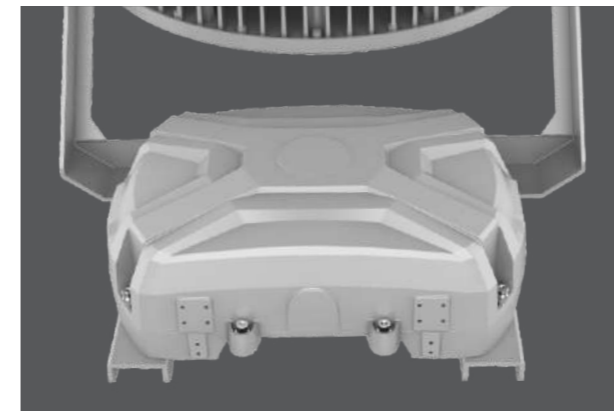


OPSPORT-VIII



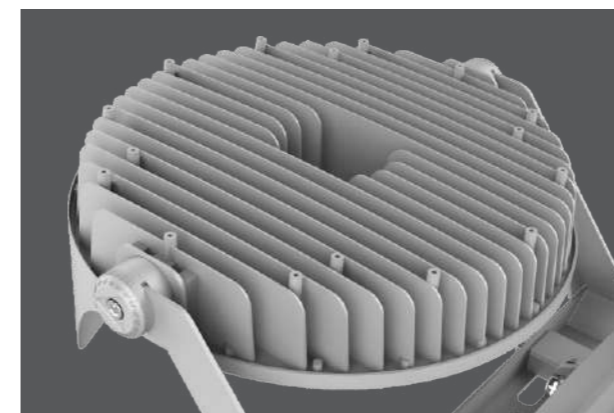
Anti-glare cover

Effectively avoid light pollution



Driver Box

Integrated or separate installation



Thermal Design

The unique design accelerates heat dissipation, extending the life of components and fixtures

OPSPORT-VIII

600W-1200W

Product Specifications

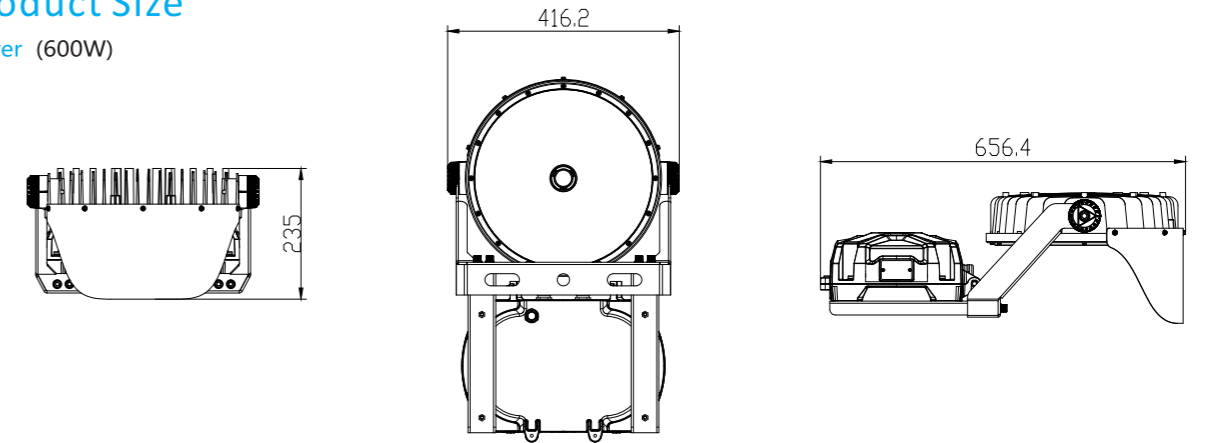
Part No.	LUX-SPVIII-600	LUX-SPVIII-800	LUX-SPVIII-1000	LUX-SPVIII-1200
Power	600W	800W	1000W	1200W
Voltage	AC180-528V / 277-480VAC			
Angle	15°/25°/40°/60°			
Luminous Efficacy	Up to 160lm/W			
CCT	5700K(2200K-6500K optional)			
CRI	>70 (>80, >90 available)			
Frequency	50/60 Hz			
LED Chips	Lumileds/Osram chip			
Driver	INVENTRONICS/MOSO			
3G Vibration Rating	EN 60068-2-6			
Epoxy-polyester Hybrid	Anti-corrosion			
IP Rating	66			
Operating temperature	-30°C to +45°C			
Function	DMX/Dali or 0-10V Dimming / Non-dimming			
Warranty	5 years			
Life span	> 100000 hours(Lifetime at L70)			
Housing Color	Grey			
Certificate	ENEC/CB/SAA/C-TICK/CE/ROHS/LM-79/TM-21/ISTMT/IP66			

Package

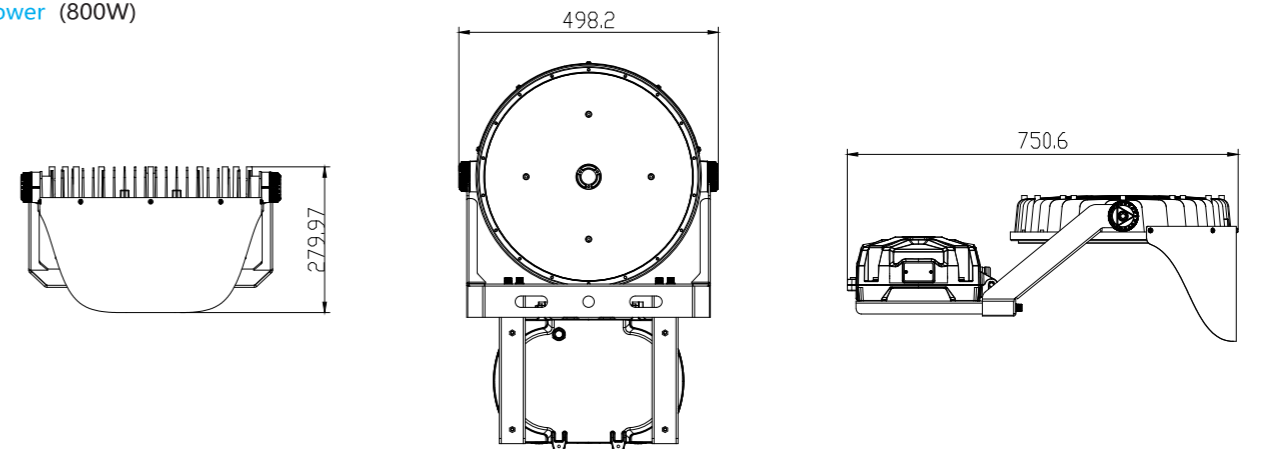
	600W	800W	1000W	1200W
Luminaire Net Weight	16.6KG	18.5KG	22.5KG	25KG
Export Carton Size	790x495x300mm	880x575x305mm	965x635x310mm	1030x314x682mm

Product Size

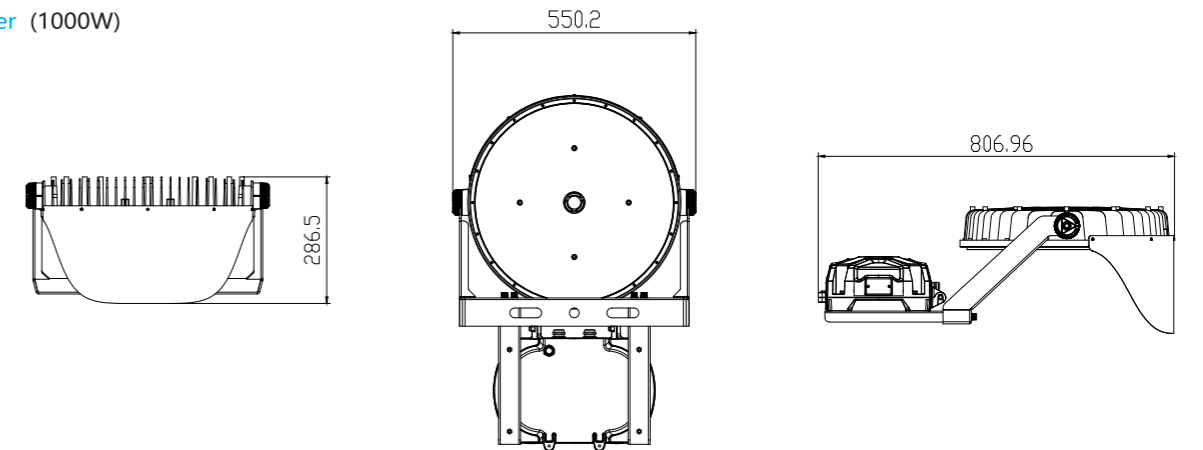
Power (600W)



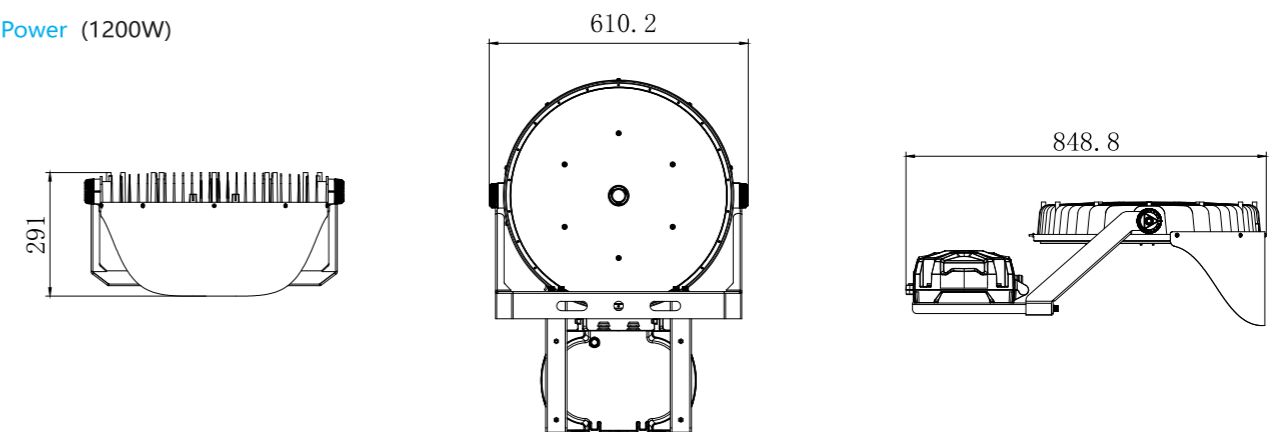
Power (800W)



Power (1000W)



Power (1200W)

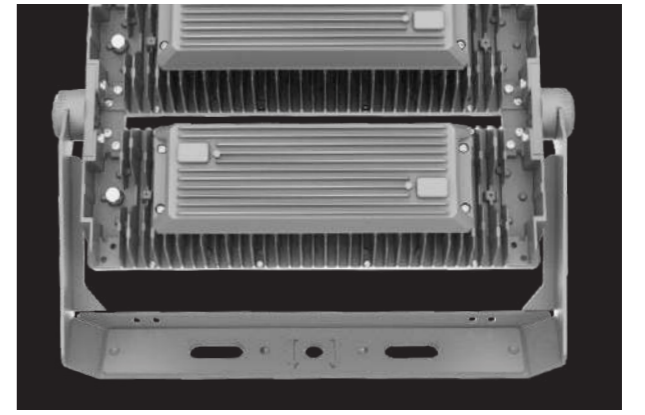


OPSPORT-X



Laser Pointer

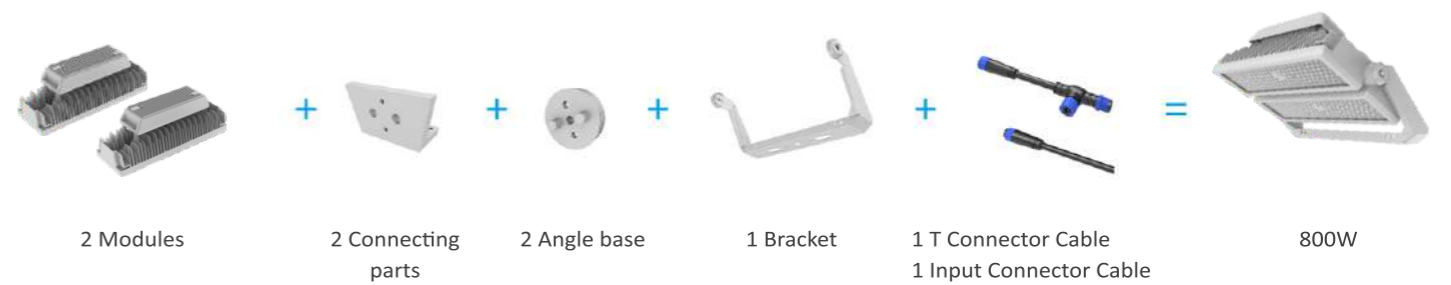
Contractors can now aim the OpSport-X accurately in the daytime by fitting a high power laser pointer.



U-Bracket

The bending mounting bracket allows enough space for easier operation when installation

With glass or without glass optional



Package

	400W	800W	1200W	1600W
Luminaire Net Weight	8.4KG	18.1KG	25.2KG	34.2KG
Export Carton Size	639x225x353mm	643x257x535mm	648x262x720mm	648x262x900mm

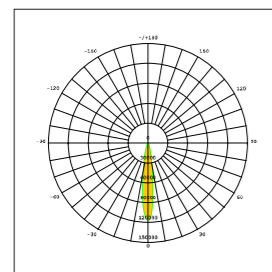
OPSPORT-X

500W-1800W

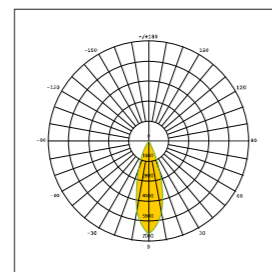
Product Specifications

Part No.	LUX-SPX-400	LUX-SPX-800	LUX-SPX-1200	LUX-SPX-1600
Power	400W	800W	1200W	1600W
Voltage	AC180-528V / 277-480VAC			
Angle	14°/30°/45°/60°/70X105°/70X115°			
Luminous Efficacy	140-160lm/W			
CCT	5700K(2200K-6500K optional)			
CRI	>70 (>80, >90 available)			
Frequency	50/60 Hz			
LED Chips	Lumileds/Seoul			
Driver	INVENTRONICS/DONE/LIFUD			
5G Vibration Rating	EN 60068-2-6			
Epoxy-polyester Hybrid	Anti-corrosion			
Operating temperature	-30°C to +45°C			
Funtion	DMX/Dali or 0-10V Dimming / Non-dimming			
Warranty	5 years			
Life span	> 100000 hours(Lifetime at L70)			
Housing Color	Grey			
Certificate	ENEC/CB/SAA/C-TICK/CE/ROHS/LM-79/TM-21/ISTMT/IP66			

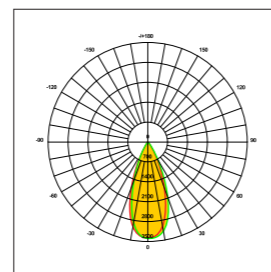
Light distribution curve



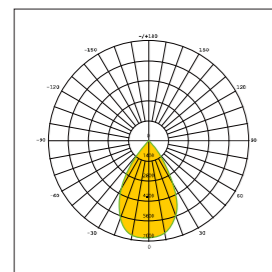
14°



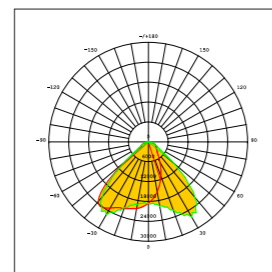
30°



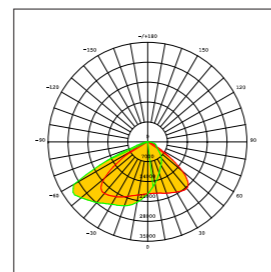
45°



60°



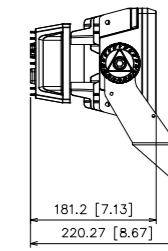
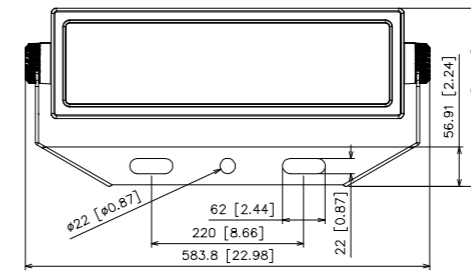
70x105°



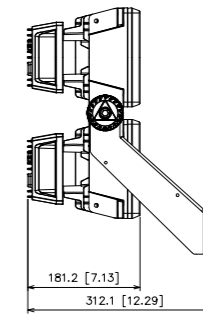
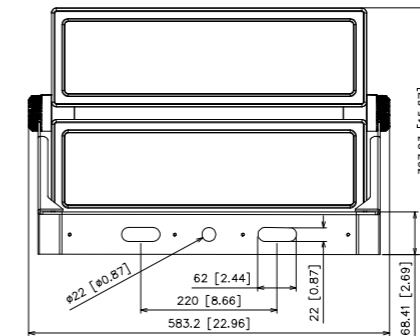
70x115°

Product Size

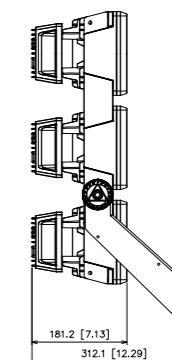
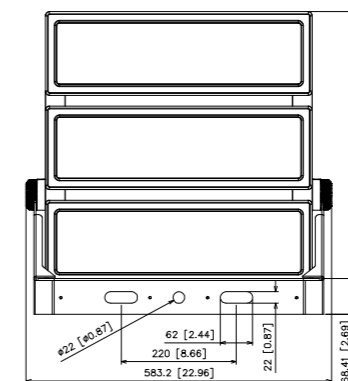
Power (400W)



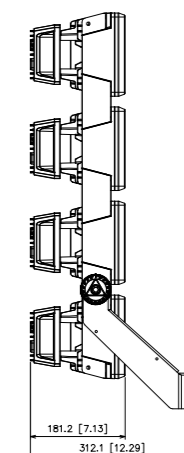
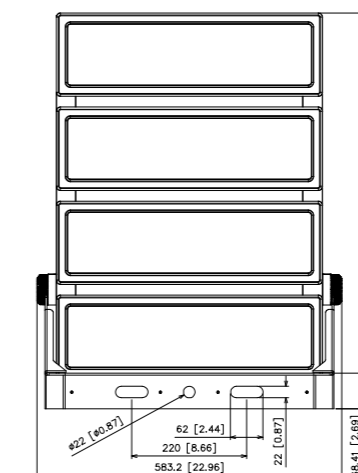
Power (800W)



Power (1200W)



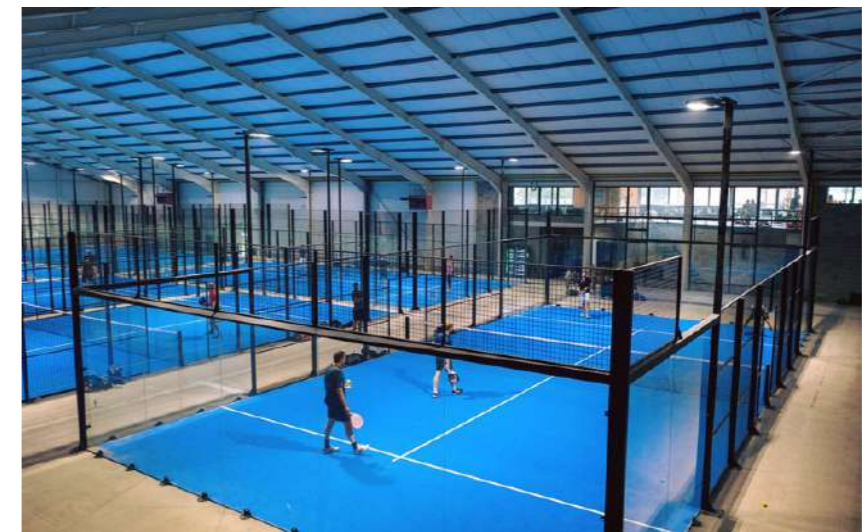
Power (1600W)



OPMILL II



Applications



OPMILL II

75W-320W

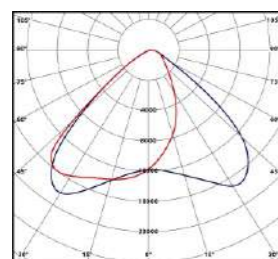
Product Parameter

Part No.	OPMILL-II-75	OPMILL-II-100	OPMILL-II-150	OPMILL-II-200	OPMILL-II-240	OPMILL-II-320
Power	75W	100W	150W	200W	240W	320W
Voltage	AC180-528V / 277-480VAC					
Angle	90°/30x100°/70x105°					
Luminous Efficacy	180lm/W					
CCT	5700K(2200K-6500K optional)					
CRI	>70 (>80, >90 available)					
Frequency	50/60 Hz					
LED Chips	Lumileds/Seoul					
Driver	INVENTRONICS/DONE/LIFUD					
5G Vibration Rating	EN 60068-2-6					
Epoxy-polyester Hybrid	Anti-corrosion					
Operating temperature	-30°C to +45°C					
Function	DMX/Dali or 0-10V Dimming / Non-dimming					
Warranty	5 years					
Life span	> 100000 hours(Lifetime at L70)					
Housing Color	Grey					
Certificate	CE/CB/EMC/SAA/ROHS/IP66					

Package

	75W	100W	150W	200W	240W	320W
Luminaire Net Weight	2.55KG	2.55KG	4.33KG	4.33KG	6.95KG	6.95KG
Export Carton Size	587x178x190mm	587x178x190mm	107x178x210mm	107x178x210mm	1568x178x210mm	1568x178x210mm

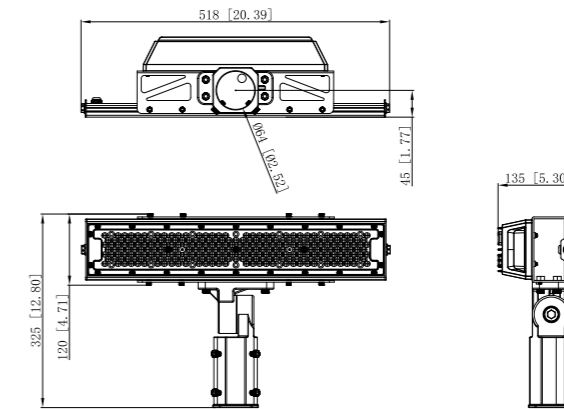
Light distribution curve



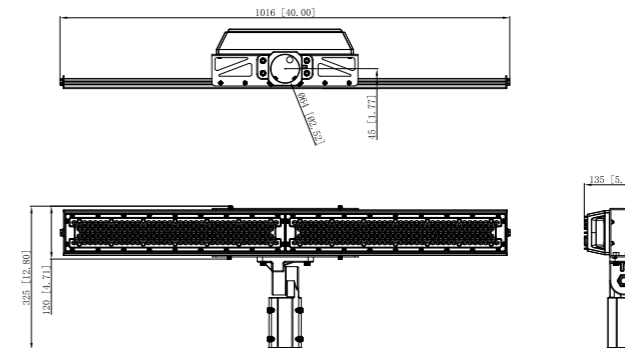
70x105°

Product Size

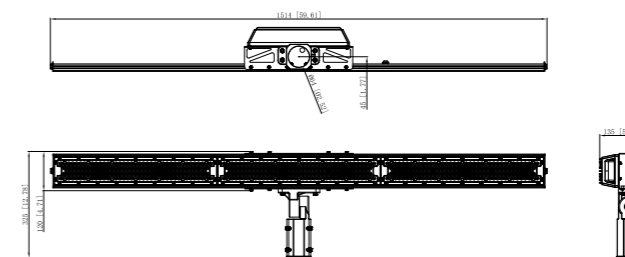
Power (75W-100W)



Power (150W-200W)



Power (240W-320W)



OPSKY

PROFESSIONAL SERIES FLOODLIGHT

MASSIVE
44,800 lm
LIGHT OUTPUT

ULTRA HIGH
160 lm/W
SYSTEM EFFICACY

LIFETIME OF
90,000+
HOURS TO L70



TAKE A LOOK AT THE OPSKY POWERFUL FEATURES



Another masterpiece of family design: OPSKY

As a cost-effective outdoor lamp, OPSKY still uses the iconic family design.

Toughened glass cover

Real UV resistance and anti-corrosion even in extreme harsh environment. The robust protection for lens and easy for cleaning away.



Bold to use the back of line shape

both sides of the waist line smooth concave slightly upward lines makes OPSKY more sporty.





Easy installation

Universal mounting bracket and angle adjustment dial makes installing the OPSKY a breeze.

IP66 waterproof grade

The design of sliding back radiator makes rainwater flow away more quickly, so as to prevent water accumulation. Structural waterproof design makes maintenance more convenient.



Photocell sensor

we can set and switch to lower costs which saves 20-50% energy and extends 2 or 4 times lifespan.



Laser company logo

According to the design concept, we design this luminaire for you to customize your company's logo.



Industry's first hollow design

Power supply will produce a lot of heat when working, and heat will go up, hollow design is to cut off heat source and lower junction temperature of LED light source.

OPSKY

50W-280W

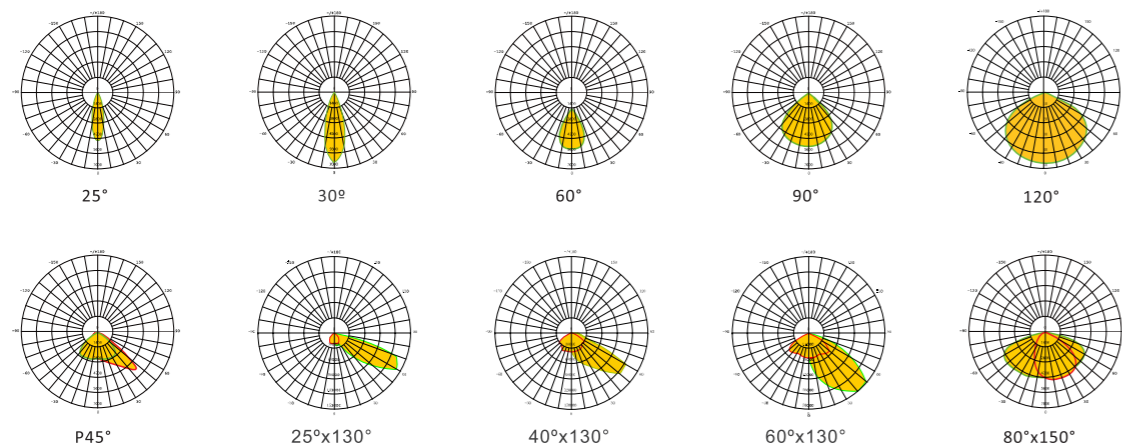
Product Parameter

Part No.	FL-OPSKY-50	FL-OPSKY-75	FL-OPSKY-100	FL-OPSKY-150	FL-OPSKY-180	FL-OPSKY-200	FL-OPSKY-240	FL-OPSKY-280
Power	50W	75W	100W	150W	180W	200W	240W	280W
Voltage	AC100-240V / 277-480VAC							
Angle	25°/30°/60°/90°/120°/80x150°				P45°/25°x130°/40°x130°/60°x130°			
Luminous Efficacy	130lm/W(SMD 3030/2835)		140lm/w (SMD5050)		160lm/w(SMD2835)			
CCT	5700K (3000K, 4000K, 5700K, 6500K available)							
CRI	>70 (>80, >90 available)							
Dim	Optional							
IP Rating	66							
Operating temperature	-30°C to +45°C							
Smart control options	DALI Dimming/1-10V Dimming							
Warranty	5 years							
Life span	> 100000 hours(Lifetime at L70)							

Package

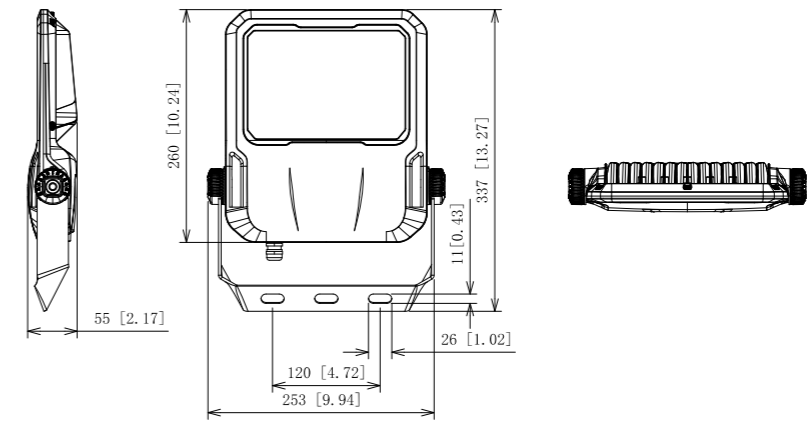
	50W	75W	100W	150W
Luminaire Net Weight	3KG	3KG	3KG	4.8KG
Export Carton Size	360x180x295mm	360x180x295mm	360x180x295mm	350x110x490mm
	180W	200W	240W	280W
Luminaire Net Weight	4.9KG	6.8KG	7KG	7.5KG
Export Carton Size	350x110x490mm	420x120x512mm	420x120x512mm	420x120x512mm

Light distribution on curve

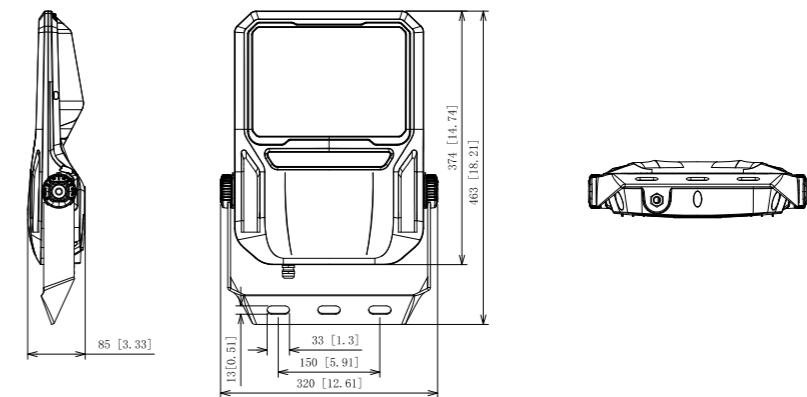


Product Size

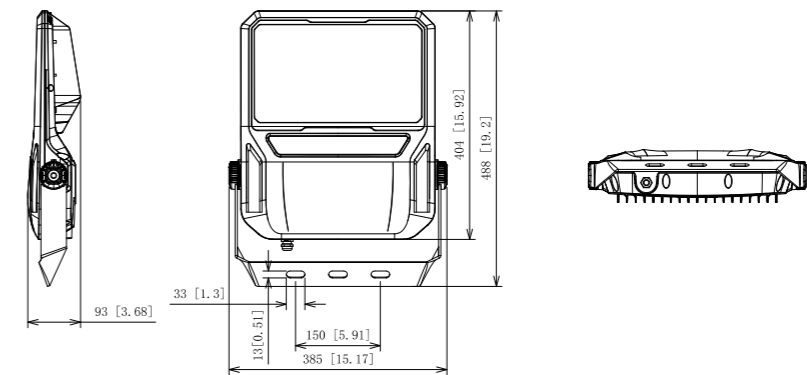
Power (50W/75W/)



Power (100W/150W/180W)



Power (200W/240W/280W)



OPCITY III

PROFESSIONAL SERIES LED STREET LIGHT

MASSIVE
32,400 lm
LIGHT OUTPUT

ULTRA HIGH
150/180/200 lm/W
SYSTEM EFFICACY

LIFETIME OF
100,000+
HOURS TO L70

IP66 & IK09 RATED

AVAILABLE FROM 25W-300W

5/7/10YEARS WARRANTY



TAKE A LOOK AT THE OPCITY III POWERFUL FEATURES



Stylish And Classic Appearance Design

OpcityIII series LED street light overturn the traditional design conception, provides higher efficiency but lower cost, it is one of the best choices for roadway lighting.



LIGHT CONTROLLER



ZHAGA



PHOTOCELL SENSOR



LORA



STREET LIGHT SMART CONTROL & CENTRAL MANAGEMENT



WEB-BASED SOFTWARE

- Single Control & Multicast
- Smart scheduling dimming
- Fault alerts & Maintenance scheduling
- Multiple Tenants
- GIS integrated & Map view
- Cloud-based or private deployment
- Multi-language interface



IP66 AND IK09

Rating of IP66 per IEC60529, ranking IK09 per EN62262, ensure long life and protection from the environment.



TOOL-FREE MAINTENANCE, EASY OPEN



LEVEL BUBBLE

The level instrument accurates the installation of lamps in one minute.



UNIQUE OPTICAL DESIGN

OPCITY III

25W-300W

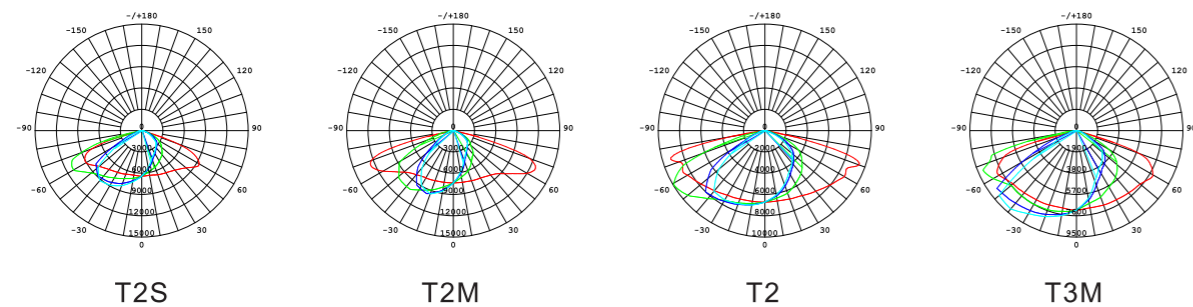
Product Parameter

Model	LUX-SLC-25/30/40/50/60/75	LUX-SLC-80/90/100/120	LUX-SLC-150/180	LUX-SLC-200/240/300
Wattage	25W/30W/40W/50W/60W/75W	80W/90W/100W/120W	150W/180W	200W/240W/300W
Input Voltage	100-240VAC			
Lumen Efficiency	140/160/180lm/W			
CCT	4000K(2200K-6500K optional)			
CRI	>70 (>80, >90 available)			
Beam angle	T2S, T2, T2M, T3M			
IP Rating	66			
Operating temperature	-30°C to +45°C			
Warranty	5/7/10 years			

Package

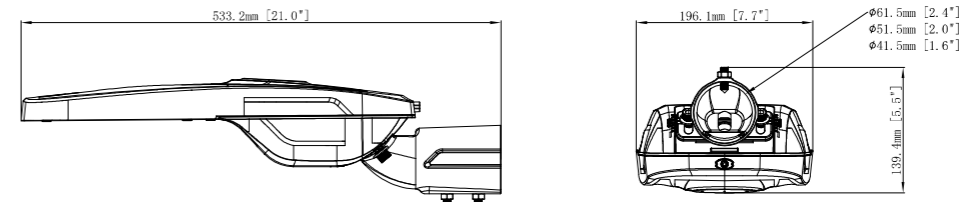
	25W	30W	40W	50W	60W	75W
Luminaire Net Weight	3.3KG	3.3KG	3.3KG	3.3KG	3.3KG	3.3KG
Export Carton Size	585x240x170mm	585x240x170mm	585x240x170mm	585x240x170mm	585x240x170mm	585x240x170mm
	80W	90W	100W	120W	150W	180W
Luminaire Net Weight	4.0KG	4.0KG	4.0KG	4.0KG	4.8KG	4.8KG
Export Carton Size	610x285x170mm	610x285x170mm	610x285x170mm	610x285x170mm	680x302x170mm	680x302x170mm
	200W	240W	300W			
Luminaire Net Weight	7.1KG	7.1KG	8.5KG			
Export Carton Size	750x390x230mm	750x390x230mm	805x395x213mm			

Light distribution curve

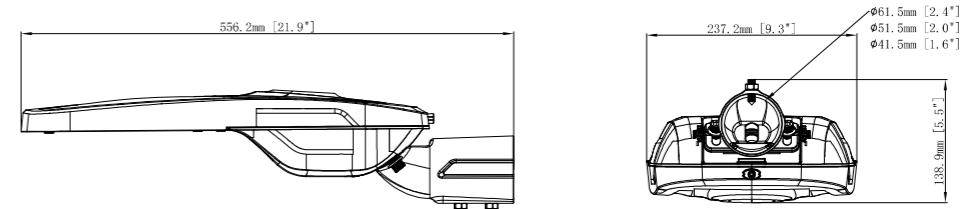


Product Size

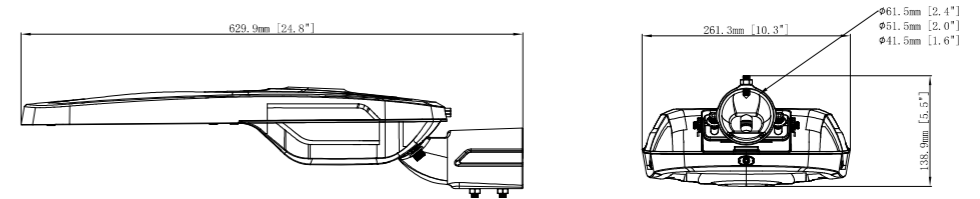
Power (25W/30W/40W/50W/60W/75W)



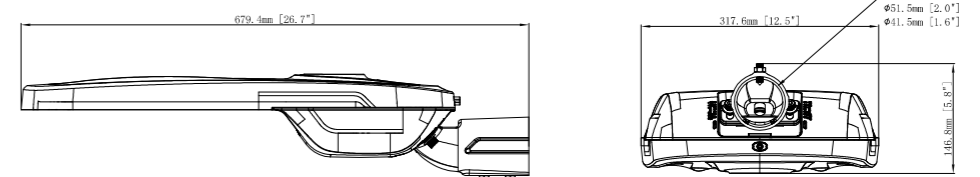
Power (80W/90W/100W/120W)



Power (150W/180W)



Power (200W/240W)



OPCITY IV

PRODUCT ADVANTAGES



LIGHT CONTROLLER



ZHAGA



PHOTOCELL SENSOR



LORA



OPCITY IV

30W-165W

Product Parameter

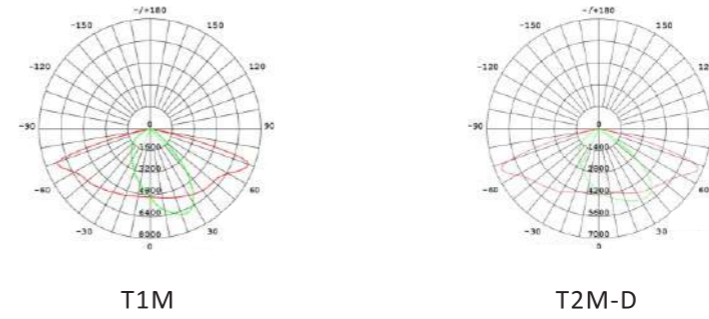
Model	OPCITY-IV-30	OPCITY-IV-40	OPCITY-IV-50	OPCITY-IV-60	OPCITY-IV-75
Wattage	30W	40W	50W	60W	75W
Input Voltage	100-240VAC				
Lumen Efficiency	160-180lm/W				
CCT	4000K(2200K-6500K optional)				
CRI	>70 (>80, >90 available)				
Beam angle	T1M/T2M-D				
IP Rating	66				
Operating temperature	-30°C to +45°C				

Model	OPCITY-IV-80	OPCITY-IV-90	OPCITY-IV-100	OPCITY-IV-120	OPCITY-IV-150	OPCITY-IV-165
Wattage	80W	90W	100W	120W	150W	165W
Input Voltage	100-240VAC					
Lumen Efficiency	160-180lm/W					
CCT	4000K(2200K-6500K optional)					
CRI	>70 (>80, >90 available)					
Beam angle	T1M/T2S/T2M-D					
IP Rating	66					
Operating temperature	-30°C to +45°C					

Package

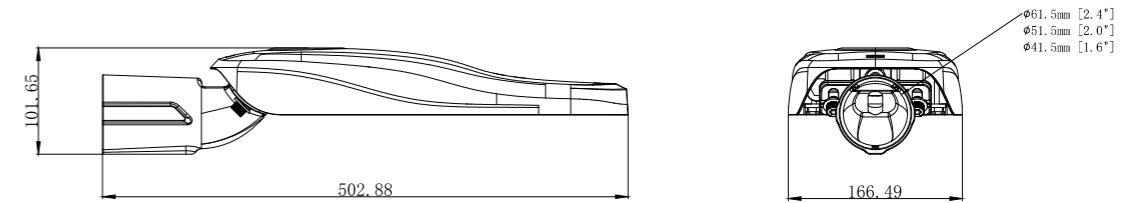
	30W	40W	50W	60W	75W	80W
Luminaire Net Weight	2.59KG	2.59KG	2.59KG	2.59KG	2.59KG	3.487KG
Export Carton Size	540x225x145mm	540x225x145mm	540x225x145mm	540x225x145mm	540x225x145mm	565x285x145mm
	90W	100W	120W	150W	165W	
Luminaire Net Weight	3.487KG	3.487KG	3.487KG	4.012KG	4.012KG	
Export Carton Size	565x285x145mm	565x285x145mm	565x285x145mm	640x285x145mm	640x285x145mm	

Light distribuθ on curve

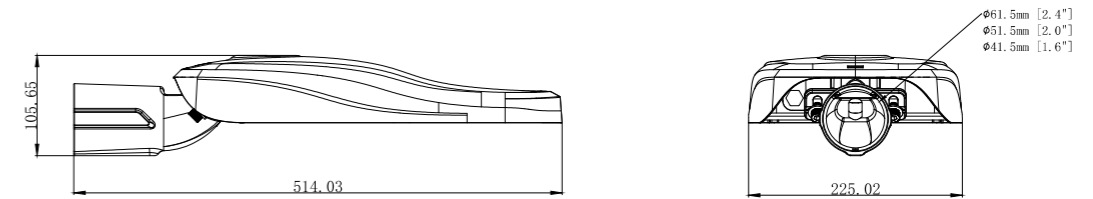


Product Size

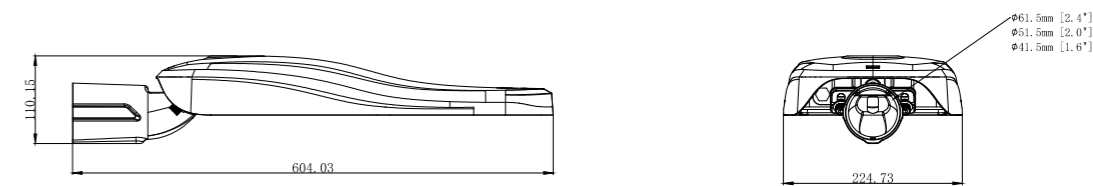
Power (30W/40W/50W/60W/75W)



Power (80W/90W/100W/120W)



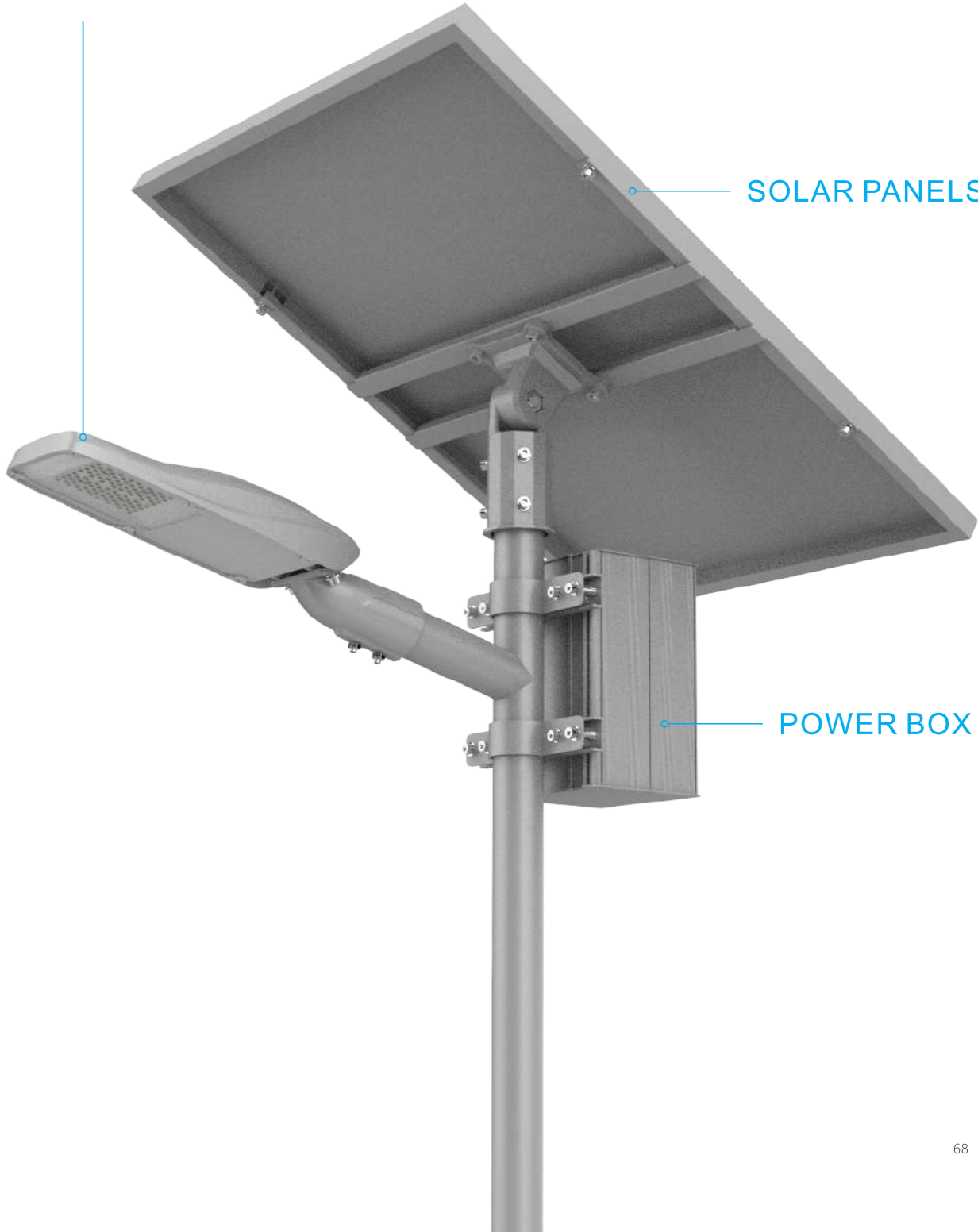
Power (150W/160W)



SOLAR STREET LIGHT

PRODUCT ADVANTAGES

SMOOTH SURFACE WITHOUT
DUST ACCUMULATION



UN38.3 **CE**

Solar Street Light

30W-165W

Product Parameter

Model	SOL-01-30	SOL-01-30	SOL-01-36	SOL-01-40	SOL-01-40
Wattage	30W	30W	36W	40W	40W
Input Voltage	100-240VAC				
Lumen Efficiency	160-190lm/W				
CCT	4000K(2200K-6500K optional)				
CRI	>70 (>80, >90 available)				
Beam angle	T1M/T2M-D				
IP Rating	66				
Operating temperature	-30°C to +45°C				

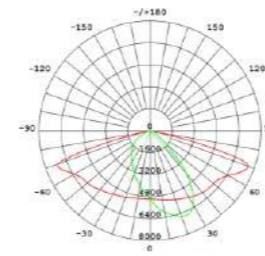
Model	SOL-01-50	SOL-01-60	SOL-01-80	SOL-01-100
Wattage	50W	60W	80W	100W
Input Voltage	100-240VAC			
Lumen Efficiency	160-190lm/W			
CCT	4000K(2200K-6500K optional)			
CRI	>70 (>80, >90 available)			
Beam angle	T1M/2M-D			
IP Rating	66			
Operating temperature	-30°C to +45°C			

Package

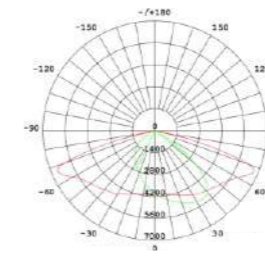
	30W	30W	36W	40W	40W
Luminaire Net Weight	2.0KG	2.0KG	2.0KG	2.0KG	2.0KG
Export Carton Size	540x225x145mm	540x225x145mm	540x225x145mm	540x225x145mm	540x225x145mm
Solar Panel Cartons	745x195x725mm	1285x195x725mm	1285x195x725mm	955x195x725mm	955x195x725mm
Power Box Carton	480x245x170mm	420x245x170mm	455x285x245mm	455x285x245mm	550x245x170mm

	50W	60W	80W	100W
Luminaire Net Weight	2.0KG	2.0KG	2.7KG	2.7KG
Export Carton Size	565x285x145mm	565x285x145mm	565x285x145mm	565x285x145mm
Solar Panel Cartons	1285x195x725mm	1405x195x725mm	1820x195x725mm	1700x195x935mm
Power Box Carton	550x245x170mm	680x245x170mm	515x285x245mm	585x285x245mm

Light distribuΘ on curve



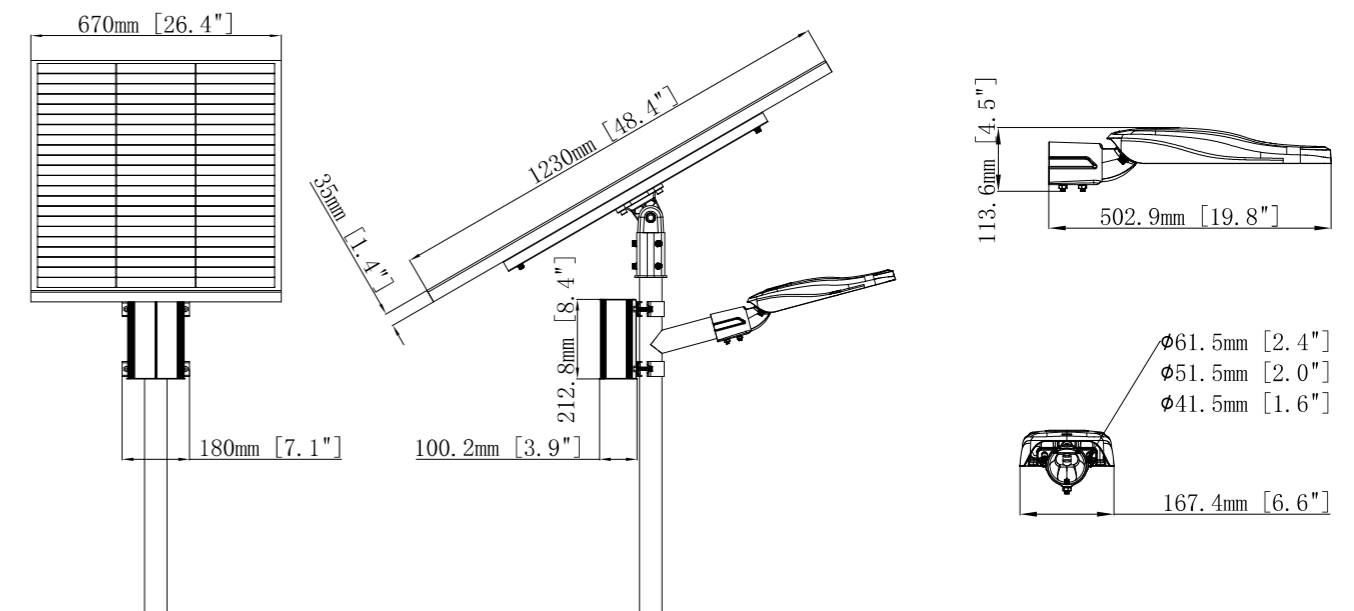
T1M



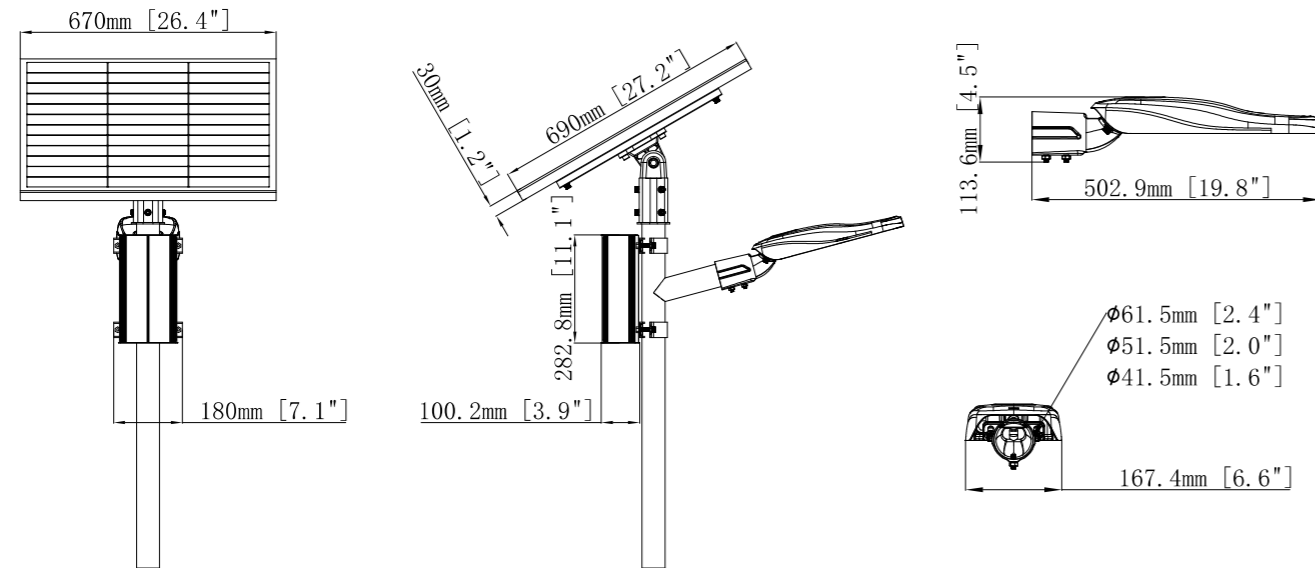
T2M-D

Product Size

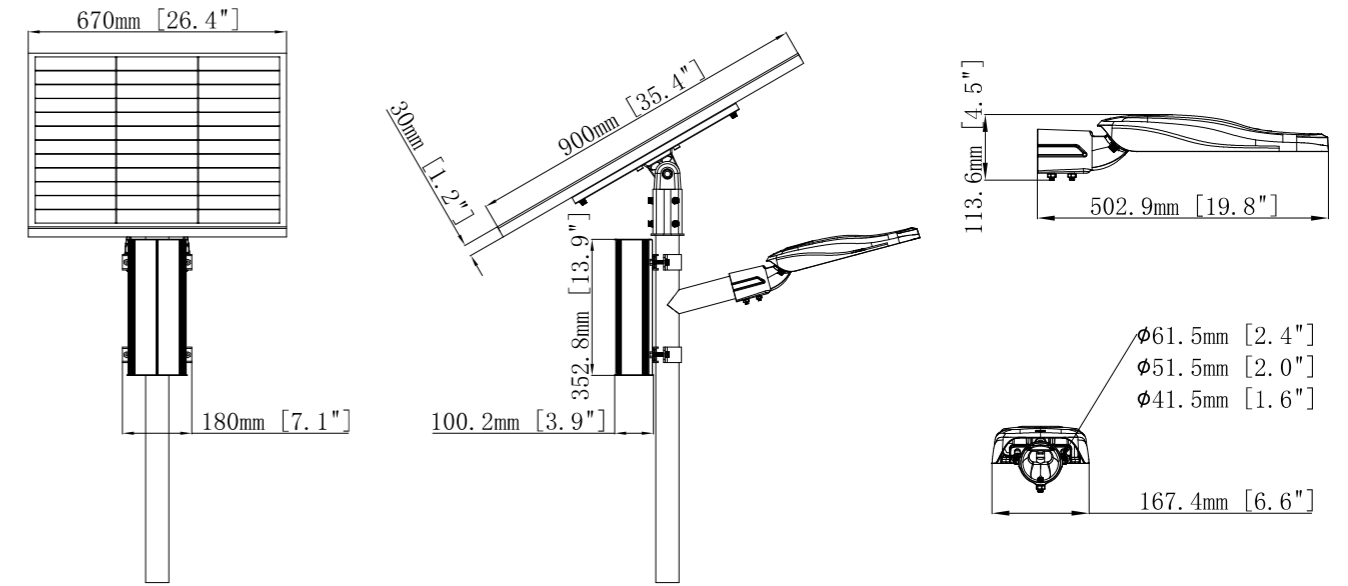
Power (30W)
 Mono solar panel (90W)
 LiFePo4 battery (12.8V-42AH)



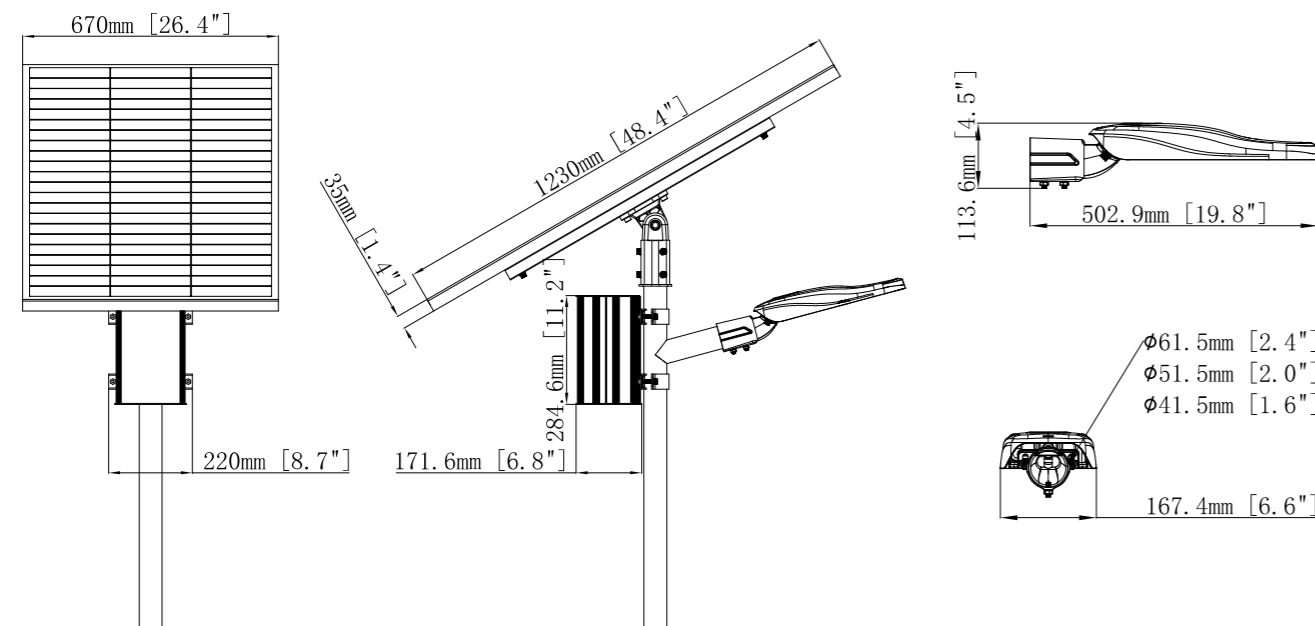
Power (30W)
 Mono solar panel (150W)
 LiFePo4 battery (12.8V-30AH)



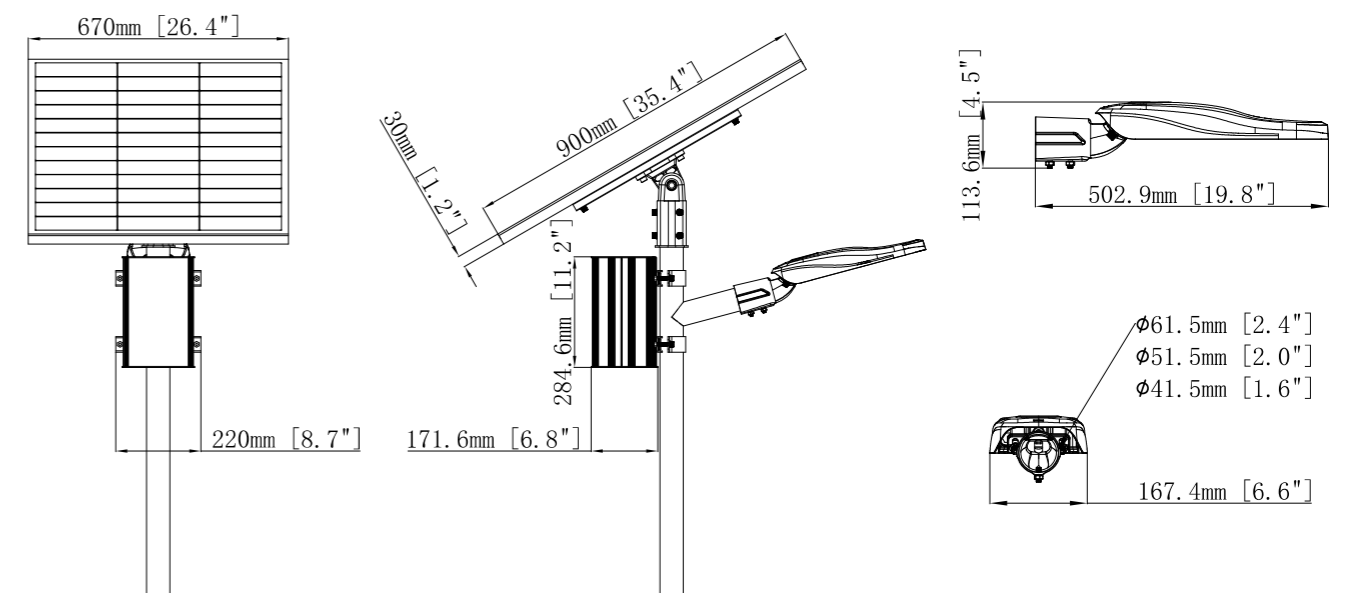
Power (40W)
 Mono solar panel (120W)
 LiFePo4 battery (12.8V-100AH)



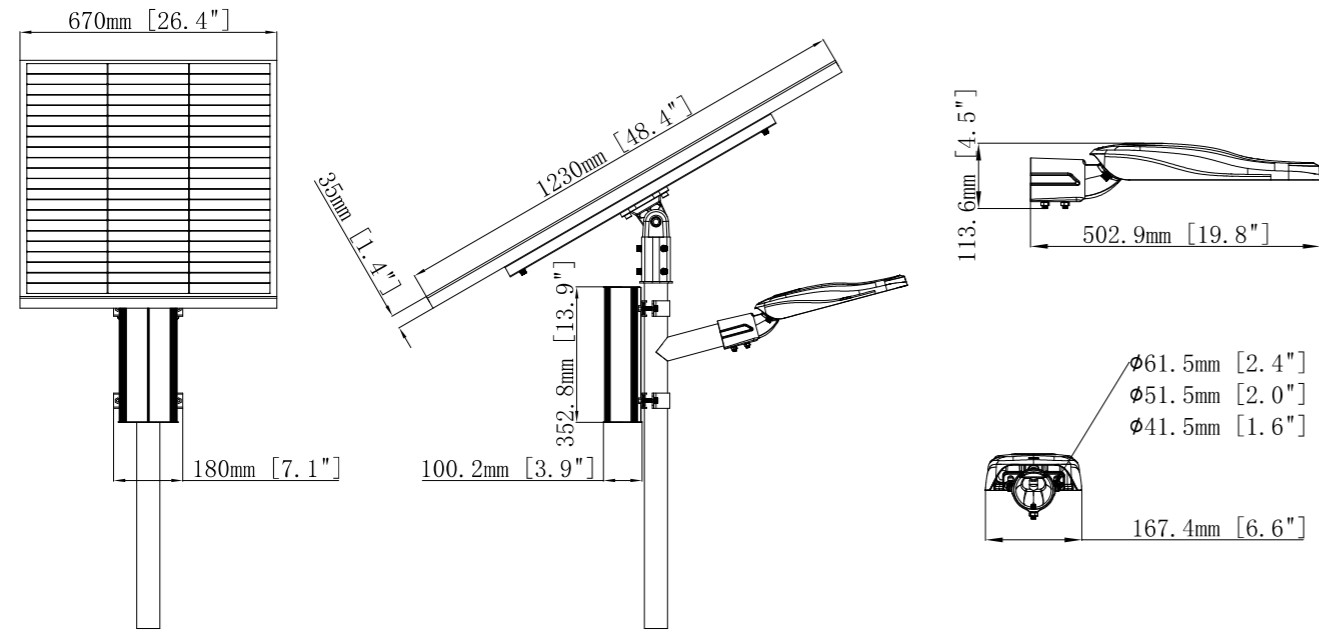
Power (36W)
 Mono solar panel (150W)
 LiFePo4 battery (12.8V-100AH)



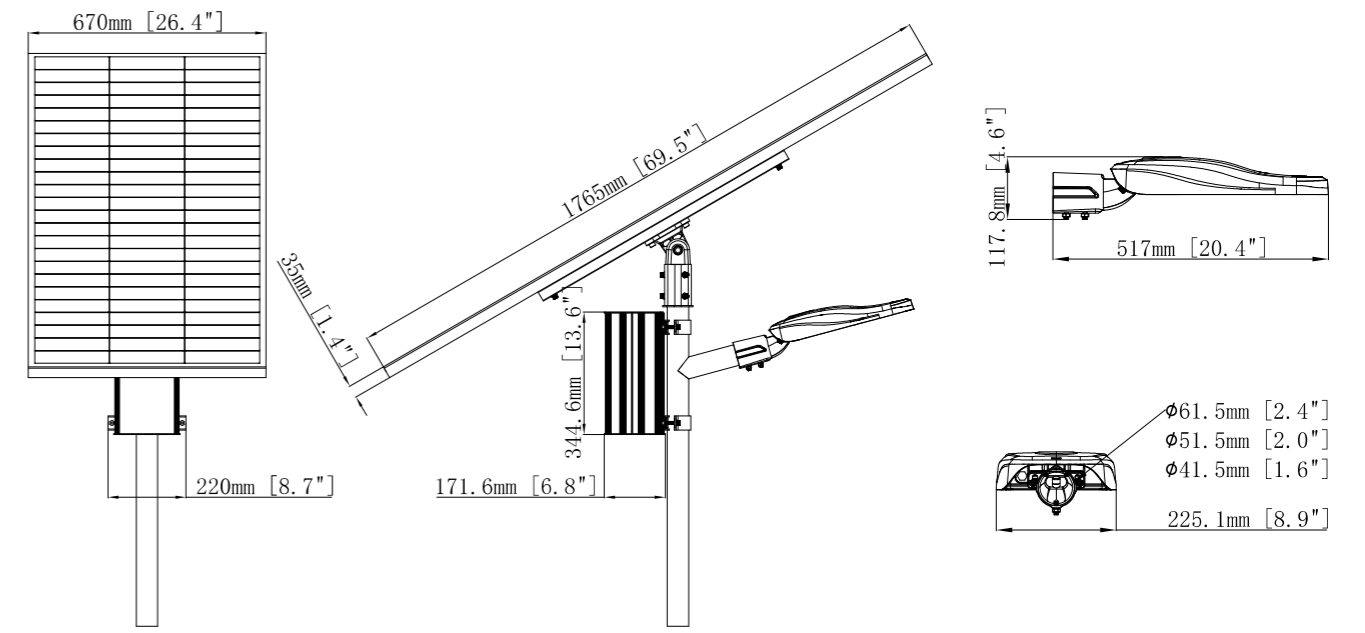
Power (40W)
 Mono solar panel (120W)
 LiFePo4 battery (12.8V-54AH)



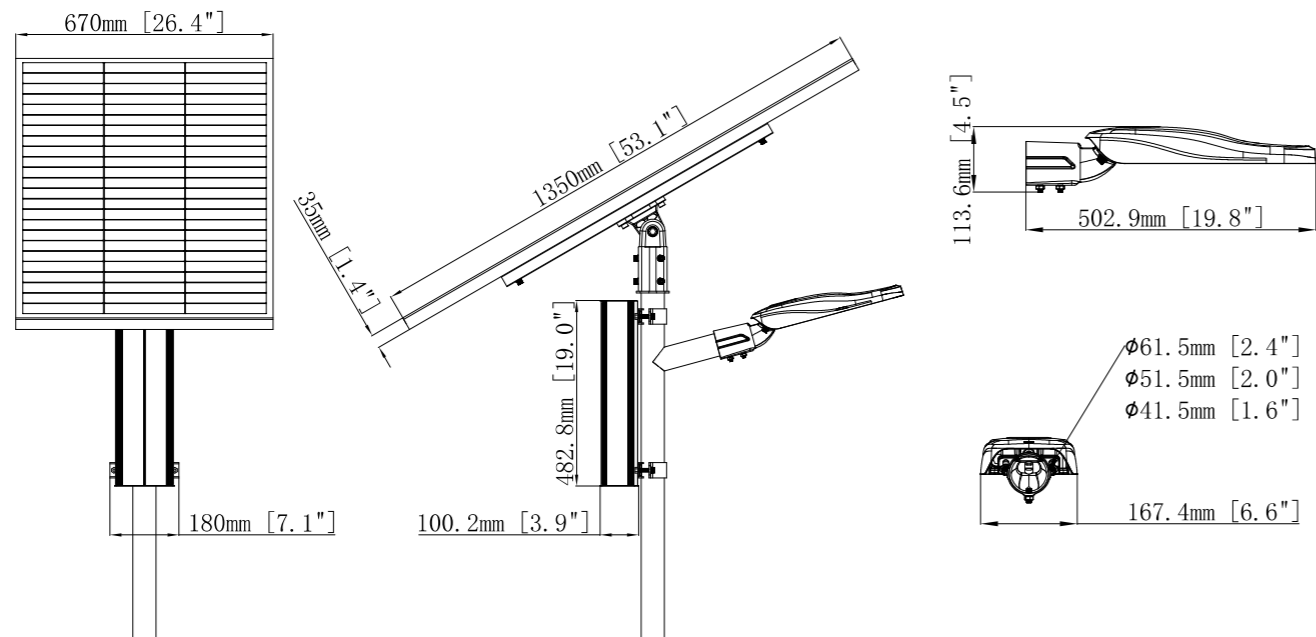
Power (50W)
 Mono solar panel (160W)
 LiFePo4 battery (25.6V-36AH)



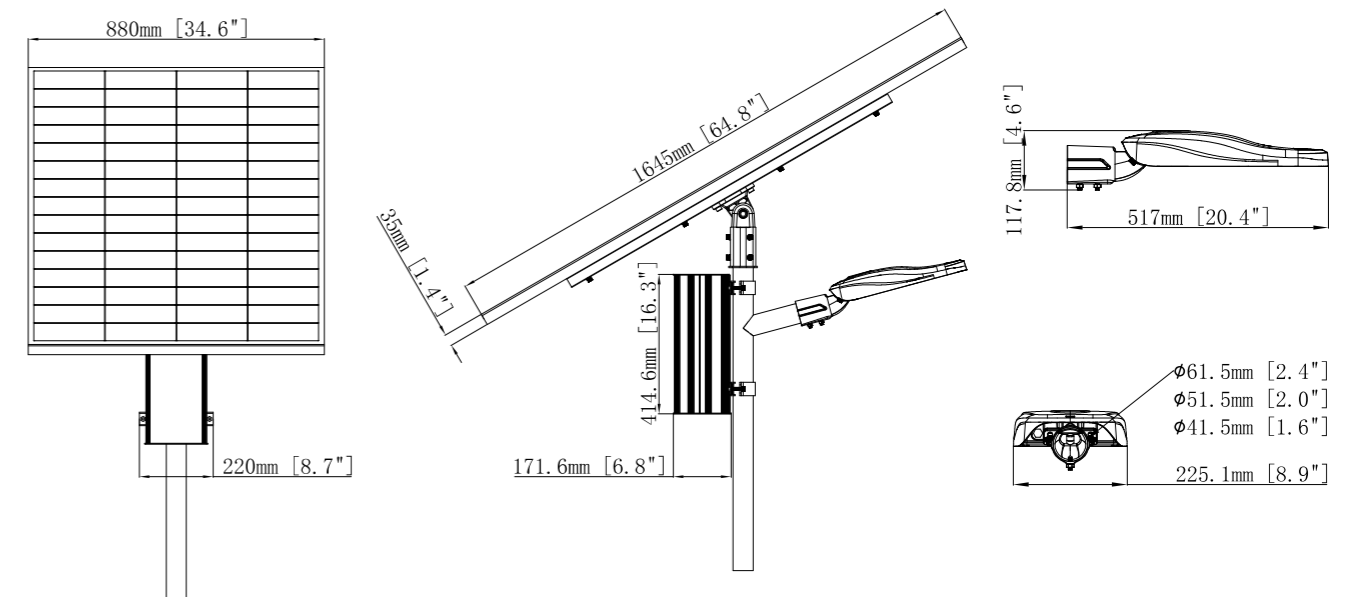
Power (80W)
 Mono solar panel (235W)
 LiFePo4 battery (25.6V-54AH)



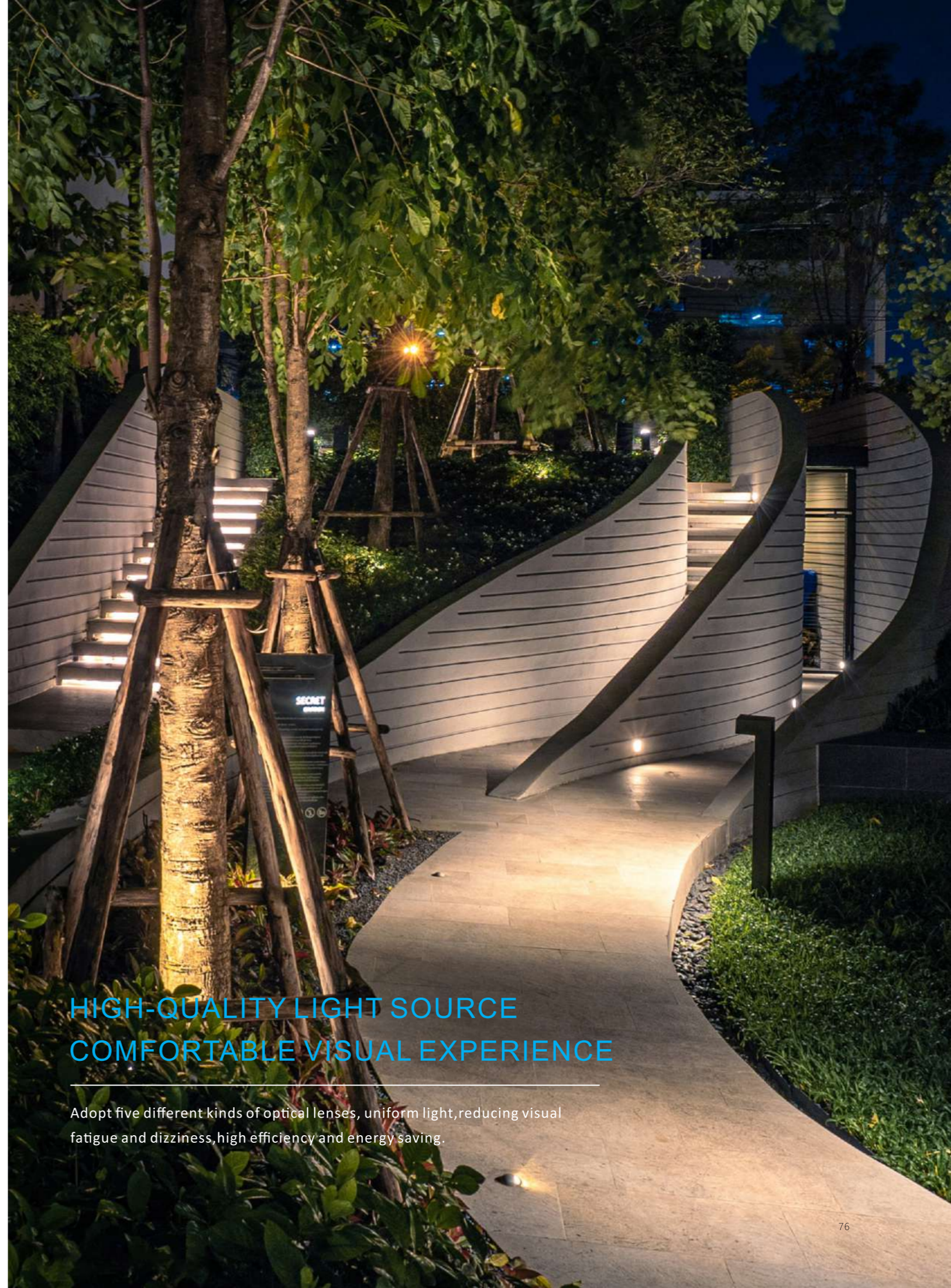
Power (60W)
 Mono solar panel (180W)
 LiFePo4 battery (25.6V-42AH)



Power (100W)
 Mono solar panel (300W)
 LiFePo4 battery (25.6V-72AH)



OPWAY



HIGH-QUALITY LIGHT SOURCE COMFORTABLE VISUAL EXPERIENCE

Adopt five different kinds of optical lenses, uniform light, reducing visual fatigue and dizziness, high efficiency and energy saving.

INSTALLATION METHOD



OPWAY

30W-50W-70W-100W

Product Specifications

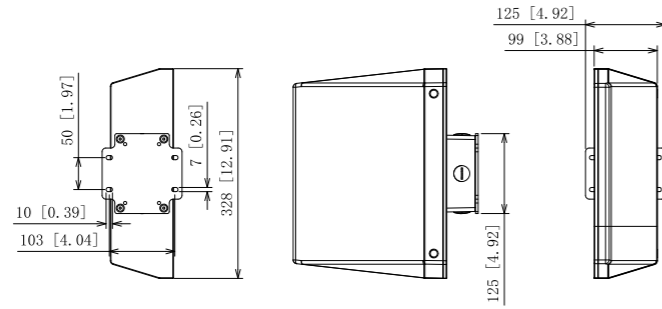
Part No.	LUX-AL-30	LUX-AL-50	LUX-AL-70	LUX-AL-100
Power	30W	50W	70W	100W
Voltage	AC100-240V / 277-480VAC			
Angle	Type II/III/Type IV/Type V			
Luminous Efficacy	Up to 160lm/W (with glass)			
CCT	5700K(2200K-6500K optional)			
CRI	>70 (>80, >90 available)			
Frequency	50/60 Hz			
LED Chips	Lumileds			
Driver	Inventronics			
3G Vibration Rating	EN 60068-2-6			
Epoxy-polyester Hybrid	Anti-corrosion			
IP Rating	66			
Operating temperature	-30°C to +50°C			
Function	Dali or 0-10V Dimming / Non-dimming			
Warranty	5 years			
Life span	> 100000 hours(Lifetime at L70)			
Housing Color	Black			
Certificate	CE/CB/EMC/SAA/ROHS/IP66			

Package

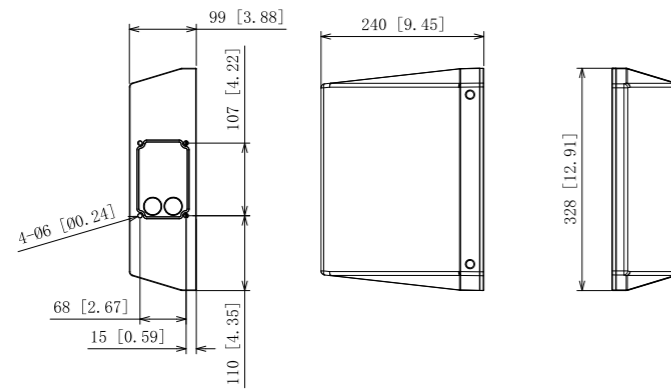
	30W	50W	70W	100W
Luminaire Net Weight	4.91KG	4.91KG	4.95KG	5KG
Export Carton Size	600x395x175mm	600x395x175mm	600x395x175mm	600x395x175mm

Product Size

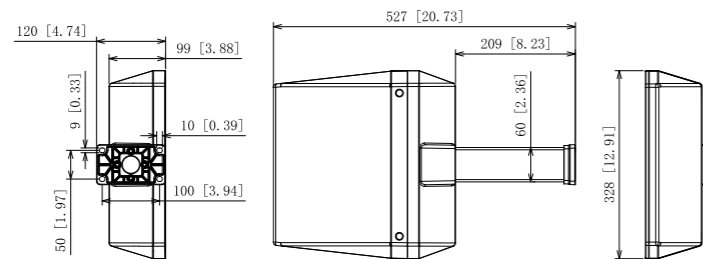
Power (30W-100W)



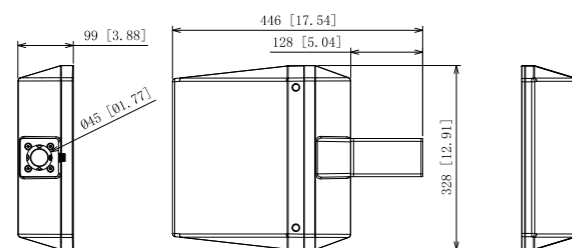
Power (30W-100W)



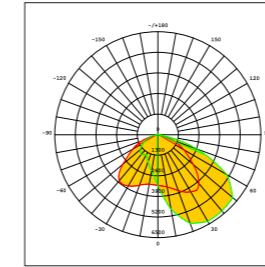
Power (30W-100W)



Power (30W-100W)

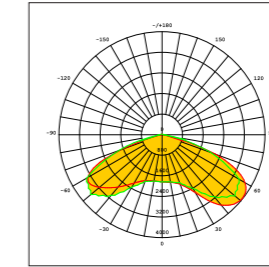


Light distribution curve



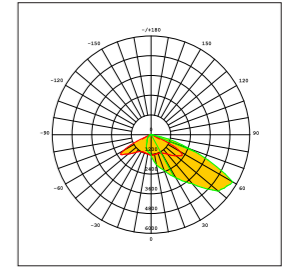
Type IV-T4-C13805

IESNA Type IV beam for wider roads and large outdoor area



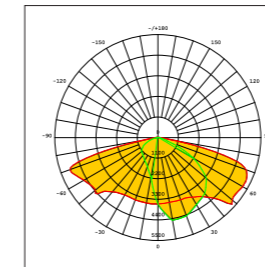
Type V-VSM-C14680

IESNA Type V (square) beam for wide areas lighting such as car parks



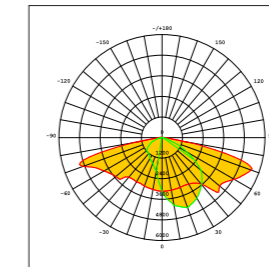
Type II-III-T4-B-C15014

Wide IESNA Type IV for ward-throw beam for wide area lighting like car parks



Type II-III-SCL-C15021

Type II/III (long) beam for very wide pole to pole distances. Ideal for pedestrian paths and residential roads. EN13201 P-classes

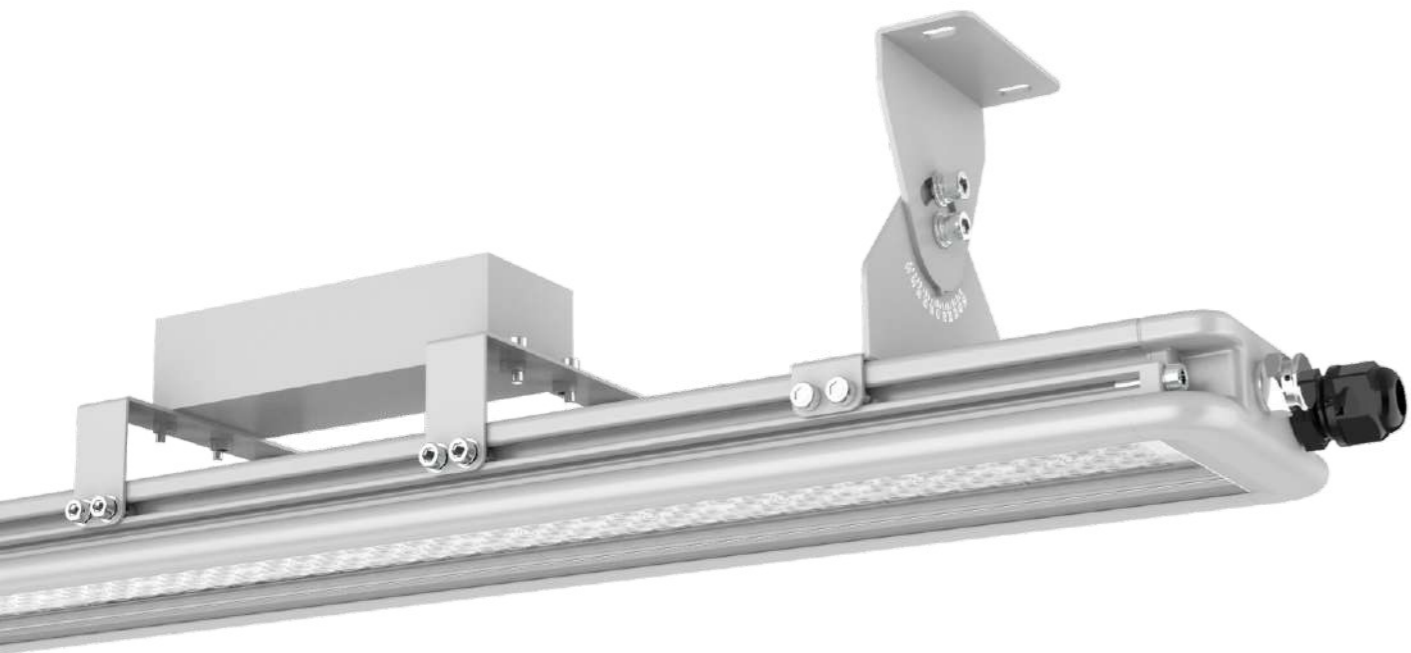


Type II-III-SCL-PC-C16473

Type II/III (long) beam for very wide pole to pole distances. Ideal for pedestrian paths and residential roads. EN13201 P-classes. Variant made from PC

OPLINE

DUAL COLOR TEMPERATURE



Multiple Mounting Options



30W/50W

75W/100W

150W/200W



OPLINE

30W-200W

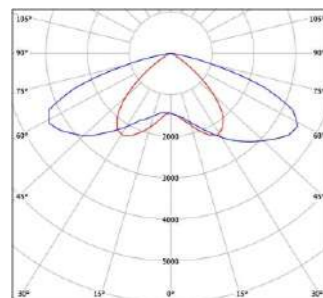
Product Parameter

Part No.	LUX-TL-30	LUX-TL-50	LUX-TL-75	LUX-TL-100	LUX-TL-150	LUX-TL-200
Power	30W	50W	75W	100W	150W	200W
Voltage	AC100-240V					
Angle	65x130°/100x145°					
Luminous Efficacy	180lm/W					
CCT	5700K (3000K, 4000K, 5700K, 6500K available)					
CRI	>70 (>80, >90 available)					
Dim	Optional					
IP Rating	66					
5G Vibration Rating	EN 60068-2-6					
Operating temperature	-30°C to +45°C					
Smart control options	1-10V,DALI					
Warranty	5 years					
Life span	> 100000 hrs					
Certificate	ENEC/CE/CB/EMC/SAA/ROHS/IP66					

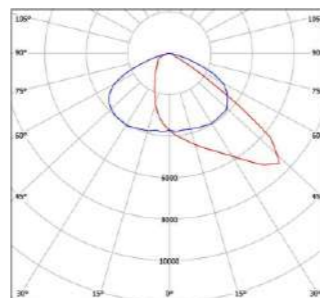
Package

	30W	50W	75W	100W	150W	200W
Luminaire Net Weight	2.15KG	2.15KG	3.5KG	3.5KG	4.5KG	4.5KG
Export Carton Size	520x198x165mm	520x198x165mm	822x198x165mm	822x198x165mm	1124x198x165mm	1124x198x165mm

Light distribution curve



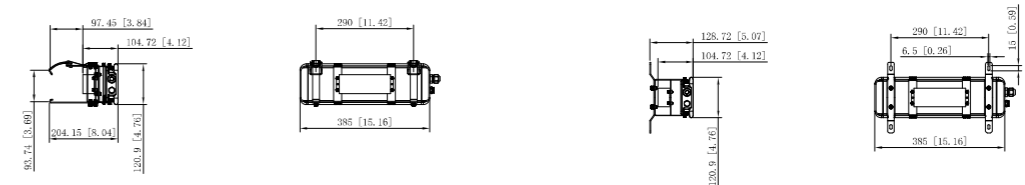
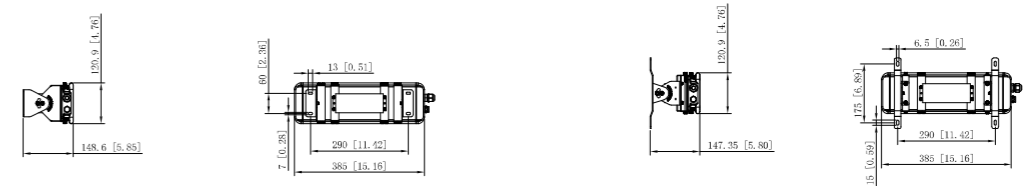
100x145°



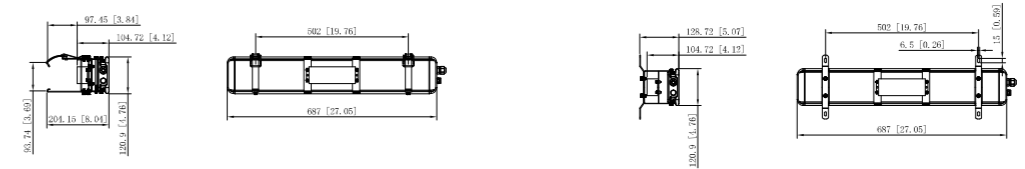
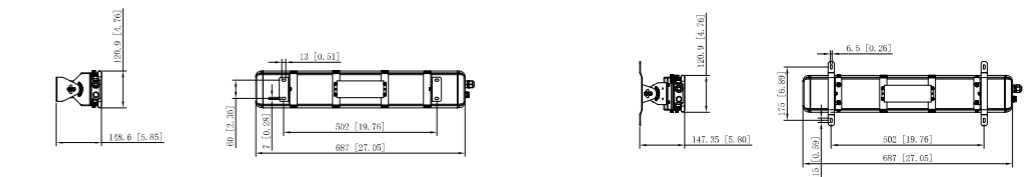
65x130°

Product Size

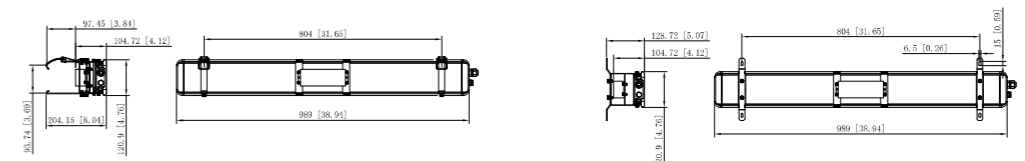
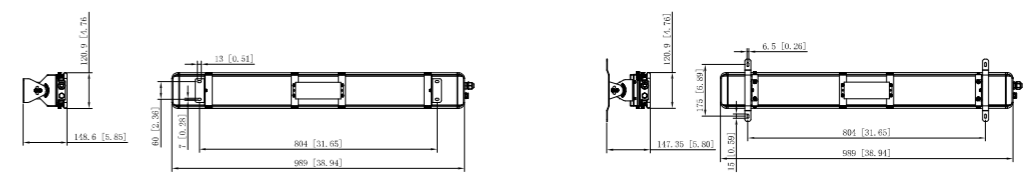
Power (30W-50W)



Power (75W-100W)



Power (150W-200W)



OPAIR



UGR < 20

Human Centric Solution

LUXSUN has never stop keeping the rhythm of market changes. When customers ask for LOW UGR, we did it.

What is UGR?

Generally speaking, it means unified glare rating. High UGR makes human fatigue which leads to uncomfortable feeling of eyes and low productivity of workers. Light is vital in our life, however, more than light, what matter is the disadvantage of light for human being. It is said that UGR rate is less than 20, our eyes have best feeling of light. After a period of time test, an eruptive technology came out.

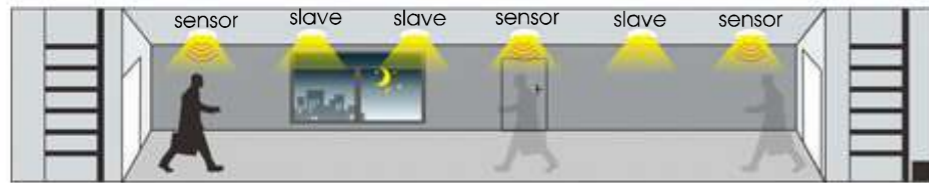
Microwave sensor

3-step dimming function

Lamps in corridor are controlled by several sensors. Once any motion is detected by one of sensors, the motion signal will be transmitted to other sensors connected together. Then, all lamps switch on at the same time, instead of switching on the lamps in the area where motion is detected.



1. No motion detected, all lamps switch off.



2. Any movement is detected from any direction, all lamps synchronously switch on.



3. No motion is detected in detection area, all lamps synchronously dim to a low light level after hold time.



4. After stand-by period, the lamps switch off if no movement is detected in the detection zone.

Daylight sensor

When used in combination with daylight sensor, the system has automated controls that either turn off or dim artificial light in response to the available daylight in the space.



Ambient light larger the preset illumination level (Set by 1-10V daylight sensor), the lamp stays off.

Ambient light below the preset illumination level, the lamp switches on when motion is detected.

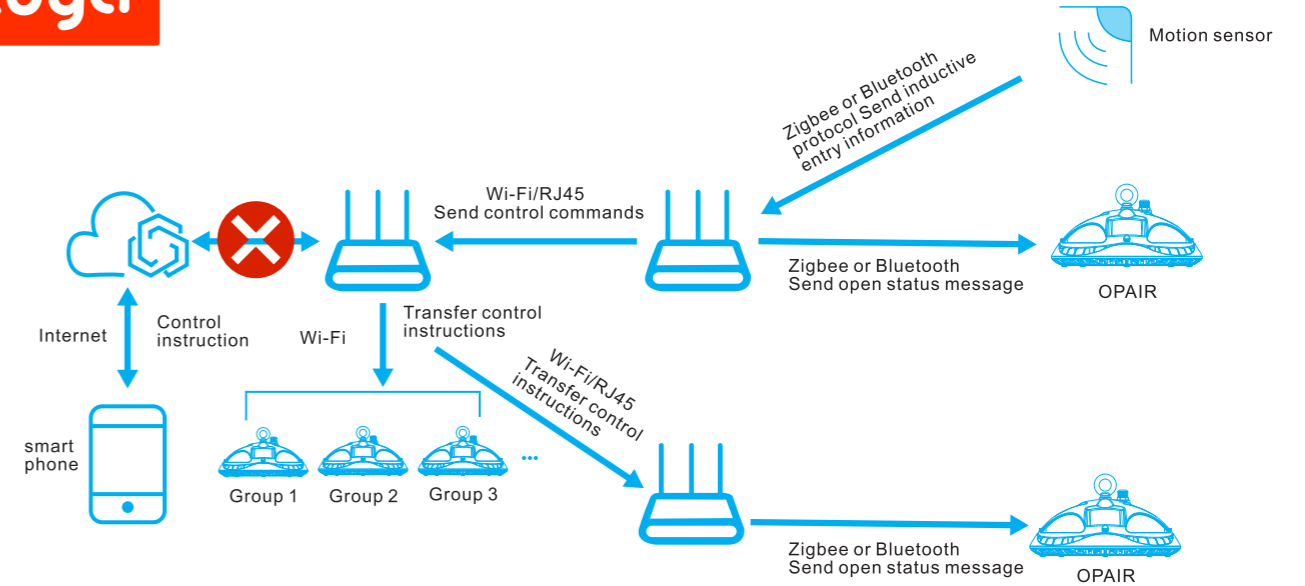
The lamp lights on 100% illumination or dims to maintain the preset illumination level against the level of ambient light.



If with sufficient ambient light, the lamp turns off at once, even with motion trigger.



If with insufficient ambient light, the lamp dims to stand-by dimming level (Set in the motion sensor) when no motion is detected after hold time, and then switches off after stand-by period.



Feature highlights

1. One-click to add sub-devices, and support multiple sub-devices to access the network at the same time, and support to add sub-devices in a non-network environment;
2. Fast networking/broadcast control without affecting user experience;
3. Sub-device dynamic heartbeat management algorithm, dynamically calculates the heartbeat time of each type of sub-device according to different network scales, and has a good control experience when working on a large-scale network;
4. Support reliable local scenarios/linkages, and support the industry's only efficient and reliable cross-gateway and cross-protocol local linkage;
5. Support reliable local group control service;
6. Support OTA service;
7. Development based on Bluetooth SigMesh standard protocol and ZigBee3.0 standard protocol;
8. It supports the function of preventing accidental deletion, which effectively solves the problem that the customer's accidental touch causes the sub-equipment to leave the network;
9. The local log of the gateway can be obtained remotely, and the error code of the sub-device and the sequence of the gateway log can be reported in real time, and the maintenance ability is strong in the later period;
10. Support DC5V and POE power supply in two ways;
11. Support RTC local clock, built-in button battery, service life of 5 years;
12. Support RJ45 and Wi-Fi two ways;
13. ipex standard interface, can connect the antenna, expand the suction cup antenna

OPAIR SUP

100W-240W

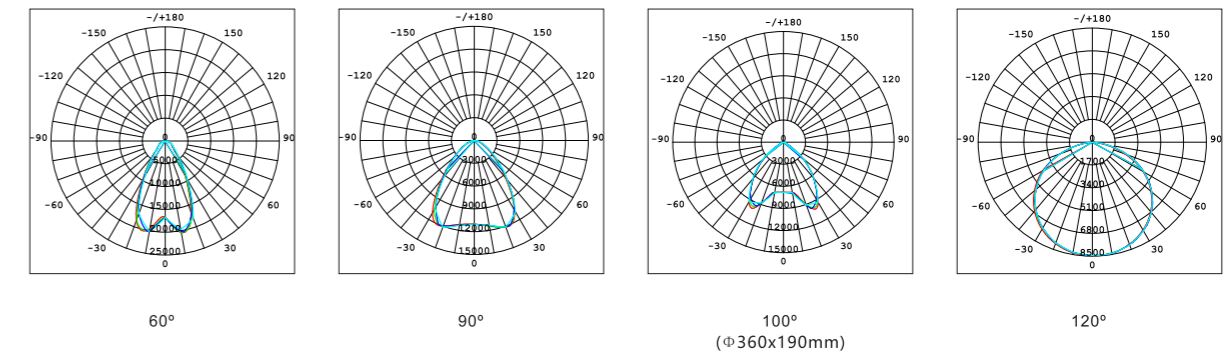
Product Parameter

Part No	LUX-HB-50HUX	H-B-80HUX	H-B-100HUX	H-B-120HUX	H-B-150HUX	H-B-180HUX	H-B-200HUX	H-B-220HUX	H-B-240HUX
Power	50W	80W	100W	120W	150W	180W	200W	220W	240W
Voltage	AC100-240V								
Angle	60°/90°/120°								
Lumen	17,000Lm		25,500Lm		34,000Lm		40,800Lm		
Luminous Efficacy	170lm/W(Lumileds2835)								
CCT	5700K (3000K, 4000K, 5700K, 6500K available)								
CRI	>70 (>80, >90 available)								
Dim	Optional								
IP Rating	66								
Operating temperature	-30°C to +45°C								
Smart control options	DALI Dimming/1-10V Dimming								
Warranty	5 years								
Life span	> 100000 hrs								

Package

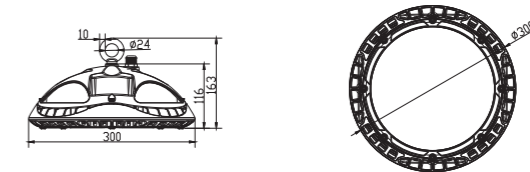
	50W	80W	100W	120W	150W
Luminaire Net Weight	3.5KG	3.5KG	3.5KG	3.5KG	3.5KG
Export Carton Size	375x375x180mm	375x375x180mm	375x375x180mm	375x375x180mm	375x375x180mm
	180W	200W	220W	240W	
Luminaire Net Weight	5.9KG	5.9KG	5.9KG	5.9KG	
Export Carton Size	425x425x205mm	425x425x205mm	425x425x205mm	425x425x205mm	

Light distribution curve

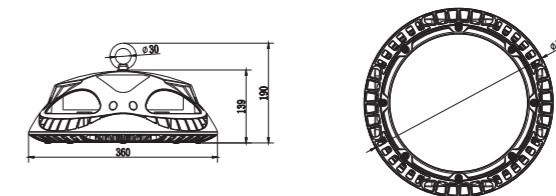


Product Size

Power:
50W-150W



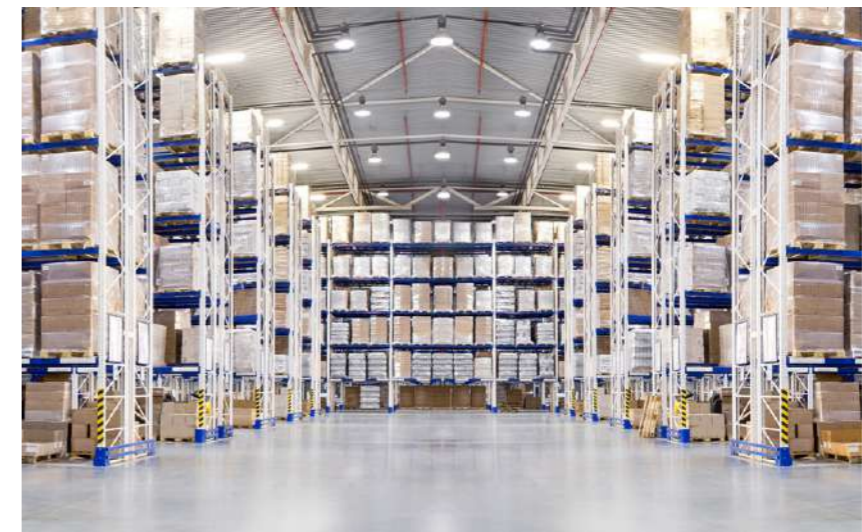
Power:
180W-240W



OPAIR-III



Applications



OPAIR-III

60W-200W

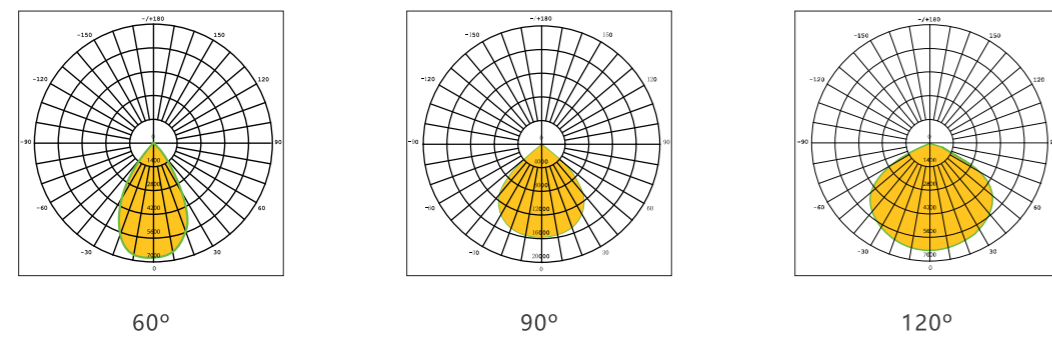
Product Parameter

Part No.	OPAIR-III-60	OPAIR-III-100	OPAIR-III-150	OPAIR-III-200
Power	60W	100W	150W	200W
Voltage	AC100-240V			
Angle	60°/90°/120°			
Luminous Efficacy	150-180lm/W			
CCT	5700K (3000K, 4000K, 5700K, 6500K available)			
CRI	>70 (>80, >90 available)			
Dim	Optional			
IP Rating	65			
Operating temperature	-30°C to +45°C			
Smart control options	DALI Dimming/1-10V Dimming			
Warranty	5 years			
Life span	> 100000 hrs			
Certificate	ENEC/CE/CB/EMC/SAA/ROHS/IP65			

Package

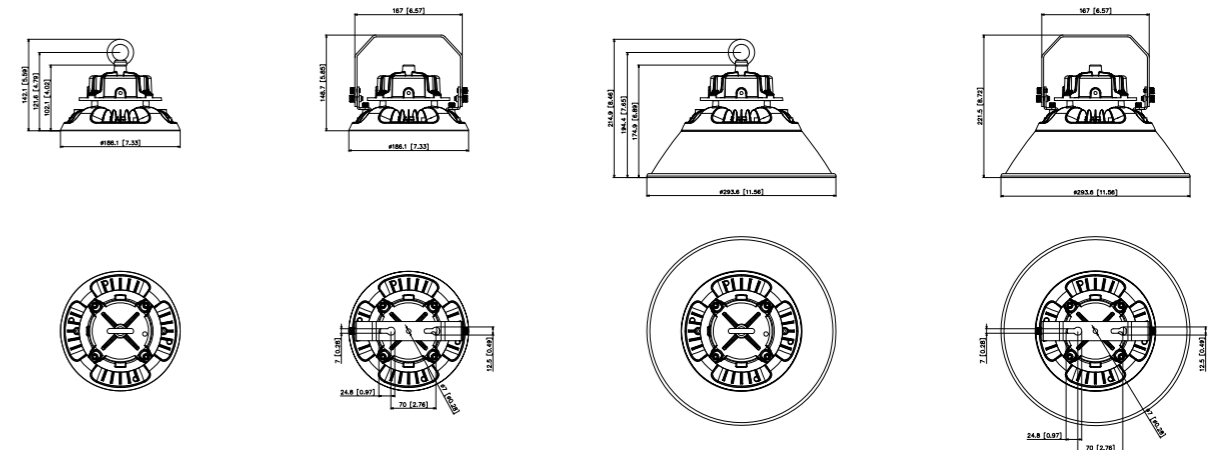
	60W	100W	150W	200W
Luminaire Net Weight	1.23KG	1.23KG	1.38KG	1.84KG
Export Carton Size	221x221x120mm	221x221x120mm	245x245x135mm	285x285x140mm

Light distribution curve

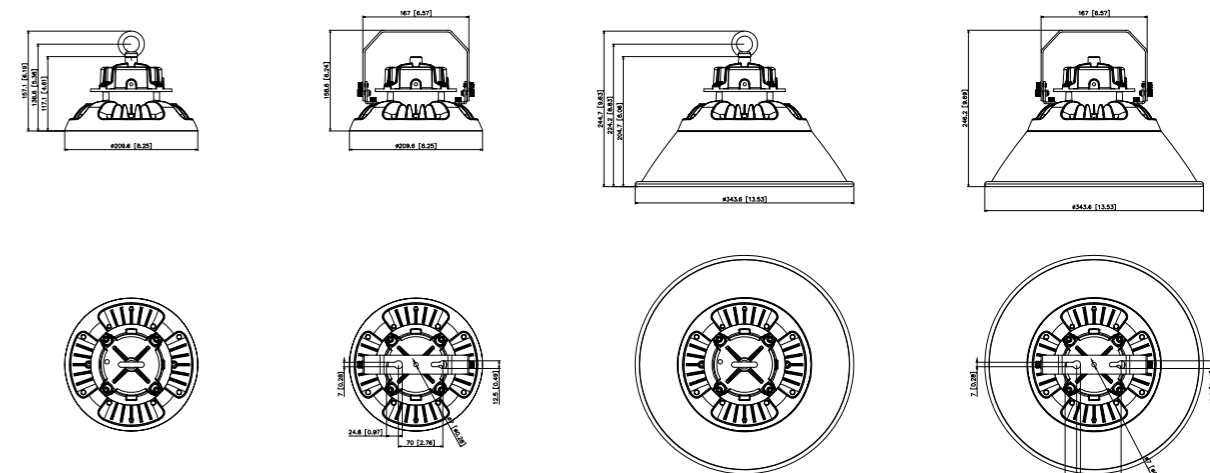


Product Size

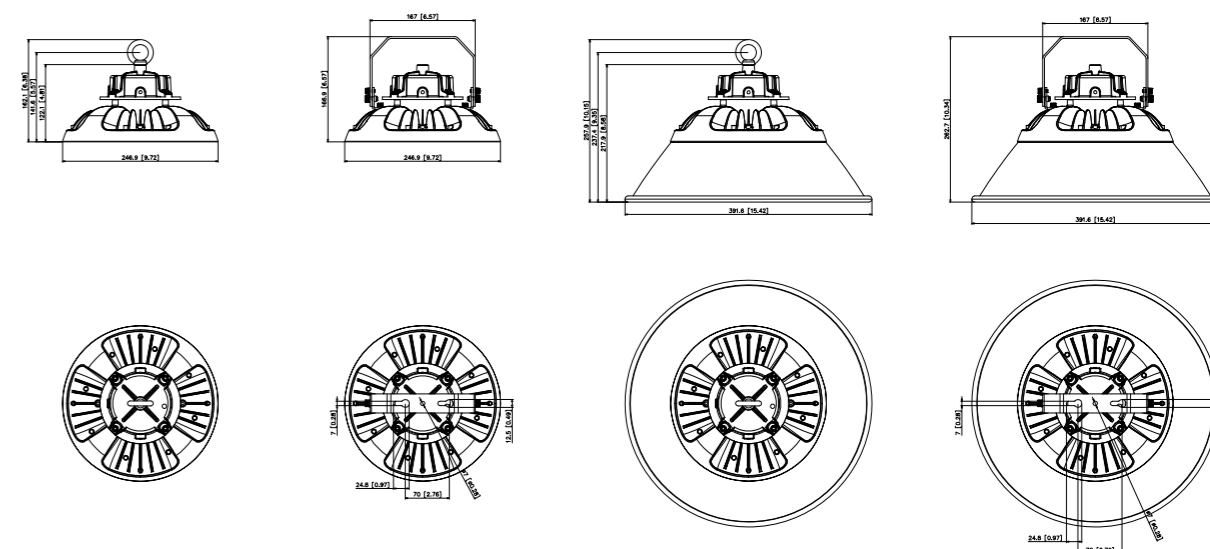
Power (60W-100W)



Power (150W)



Power (200W)



OPMILL II

TAKE A LOOK AT THE OPMILL II POWERFUL FEATURES

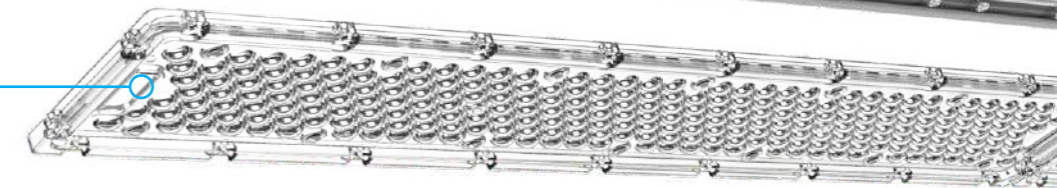


ANTI-CORROSION COMPOSITION

Heat sink: Aluminium alloy AL6063



PC LENS



Applications



OPMILL II

75W-320W

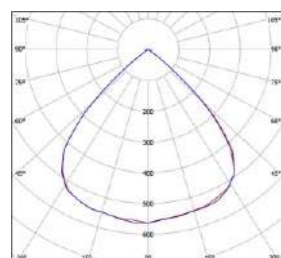
Product Parameter

Part No.	OPMILL-II-320	OPMILL-II-75	OPMILL-II-100	OPMILL-II-150	OPMILL-II-200	OPMILL-II-240
Power	320W	75W	100W	150W	200W	240W
Voltage	AC180-528V / 277-480VAC					
Angle	90°/30x100°/70x105°					
Luminous Efficacy	180lm/W					
CCT	5700K(2200K-6500K optional)					
CRI	>70 (>80, >90 available)					
Frequency	50/60 Hz					
LED Chips	Lumileds/Seoul					
Driver	INVENTRONICS/DONE/LIFUD					
5G Vibration Rating	EN 60068-2-6					
Epoxy-polyester Hybrid	Anti-corrosion					
Operating temperature	-30°C to +45°C					
Funtion	DMX/Dali or 0-10V Dimming / Non-dimming					
Warranty	5 years					
Life span	> 100000 hours(Lifetime at L70)					
Housing Color	Grey					
Certificate	ENEC/CE/CB/EMC/SAA/ROHS/IP66					

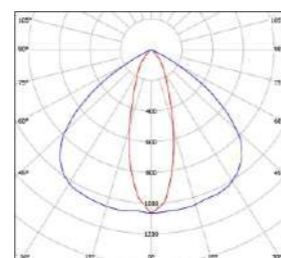
Package

	75W	100W	150W	200W	240W	320W
Luminaire Net Weight	2.55KG	2.55KG	4.33KG	4.33KG	6.95KG	6.95KG
Export Carton Size	587x178x190mm	587x178x190mm	1070x178x210mm	1070x178x210mm	1568x178x210mm	1095x281x210mm

Light distribution curve



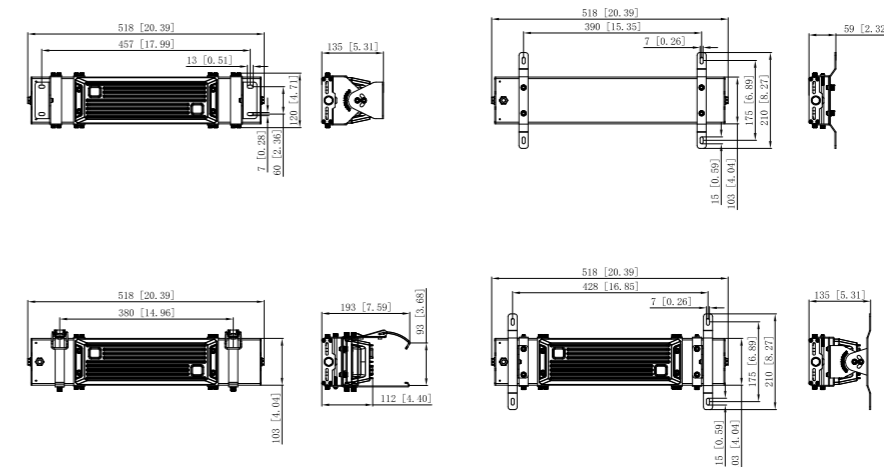
90°



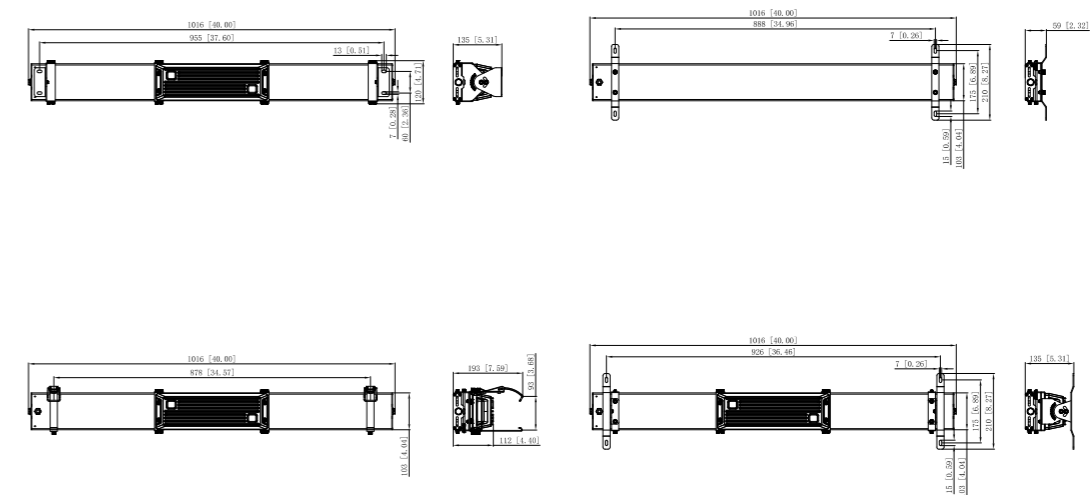
30x100°

Product Size

Power (75W-100W)



Power (150W-200W)



Power (240W-320W)

